



NORGES BILSPORTFORBUND

HOMOLOGERINGSdokument VORTEX ROK TT

Homologeringsnr.
NBF-12/M/14

Utgave 01/2010

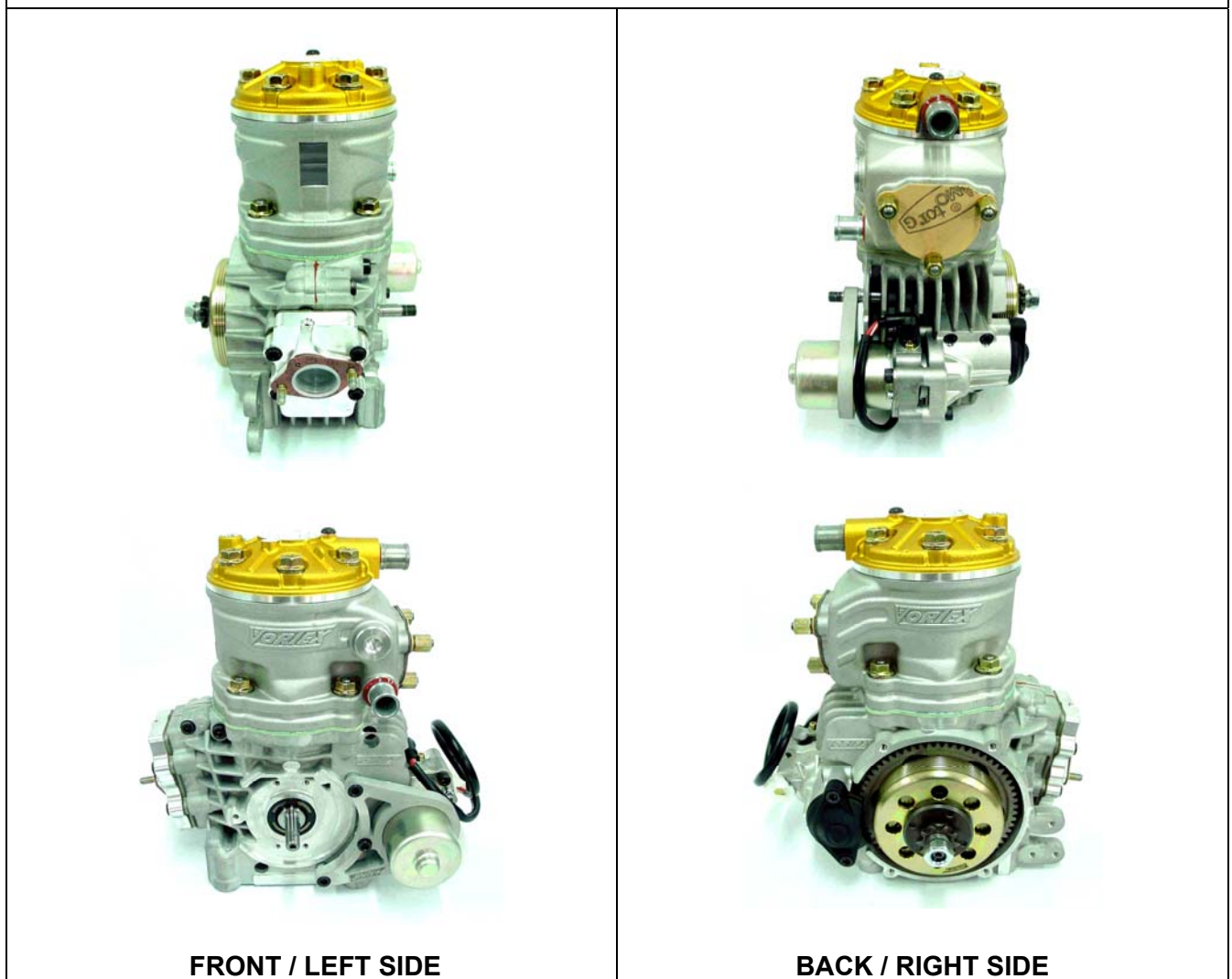
Produsent	OTK-KART-GROUP S.R.L (ITALY)	
Merke	VORTEX	
Modell	ROK TT	
Homologeringsperiode	1. Januar 2010 - 31. Desember 2014	8 Sider (+1)




VORTEX s.r.l. Via Scarpone, 39 I – 27100 PAVIA	HOMOLOGATION FORM for ENGINE cl. 125 cc.	Form.
		N. OMOL.

Manufacturer	VORTEX s.r.l.
Make	VORTEX s.r.l.
Model	ROK TT
Inlet type	REED VALVE
Number of pages	8

PICTURE OF ENGINE



Official TAG Segnature and Stamp	Importer Segnature and Stamp
	





TECHNICAL INFORMATION		
A CHARACTERISTICS		
	Measurement	Tolerances
Volume of cylinder	123.9 cc	125cc MAX
Original bore	54.05 mm	±0.2
Theoretical maximum bore	54.28 mm	MAX
Stroke	54.00 mm.	± 0.2 mm
Cooling system	WATER-COOLED	
Number of carburation systems	1	
Number of transfer ports/ducts, cylinder/sump	3/3	
Number of exhaust ports/ducts	3	
Shape of combustion chamber	Spherical with squish	
Length between axes of the Connecting rod	102 mm	± 0.2 mm
Minimum weight of connecting rod	110 g	MIN
Volume of combustion chamber	7.5 cc	MIN
Type of bearings and size	Big End of Rod Bearing= 20x26x15 Little End of Rod Bearing= 14x18x17 Crankshaft Bearing= 25x52x15	

B OPENING ANGLES (all measurement done with 0.20mm feeler gauge)		
		Tolerances
Inlet	180°	± 2°
Exhaust	180°	± 2°

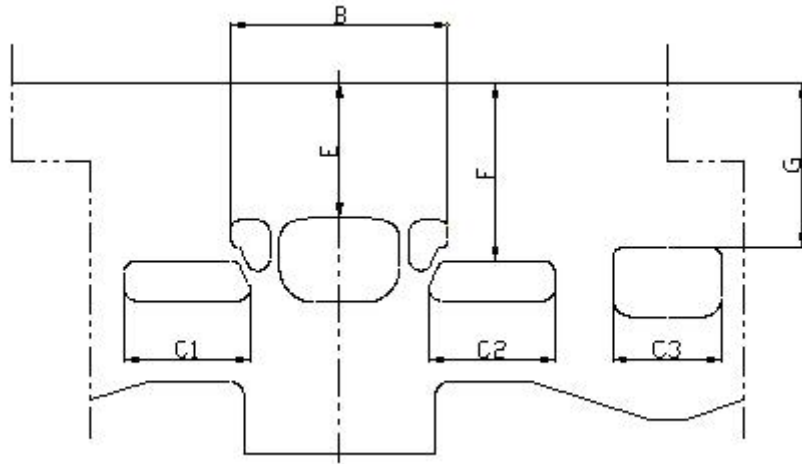
C LIST OF ACCESSORIES INCLUDED	
Carburetor	Carburetor ø24 with integrated fuel pump
Generator for battery charging	External battery charger
Electric starter	On board
Exhaust with flex	Exhaust with silencer

D MATERIAL	
Cylinder	AL – SI ALLOY
Connecting rod	NI – CR – MO STEEL
Crankshaft	NI – CR – MO STEEL
Head	AL – SI ALLOY
Liner	IRON
Crankcase	AL – SI ALLOY
Piston	AL – SI ALLOY
Piston Ring	STEEL OR IRON



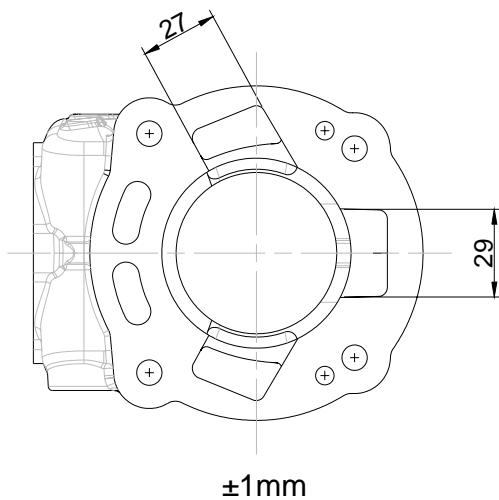
DRAWING OF THE CYLINDER DEVELOPMENT

B	53.5 ± 0.5mm
C1=C2	28 ± 0.5mm
C3	27.5 ± 0.5mm
E	180° ± 2°
F	128.5° ± 2°
G	140° ± 2°

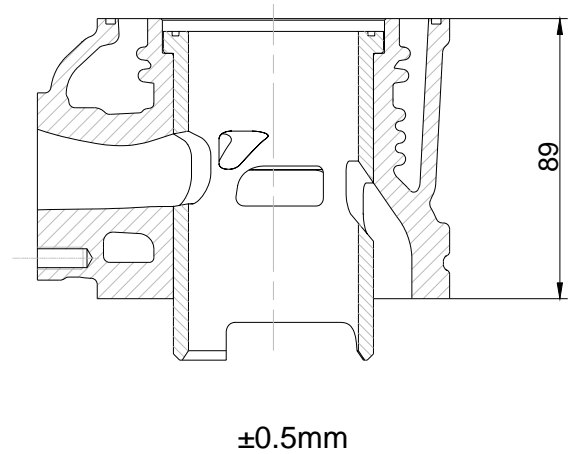


Angular reading by 0.2mm feeler gauge

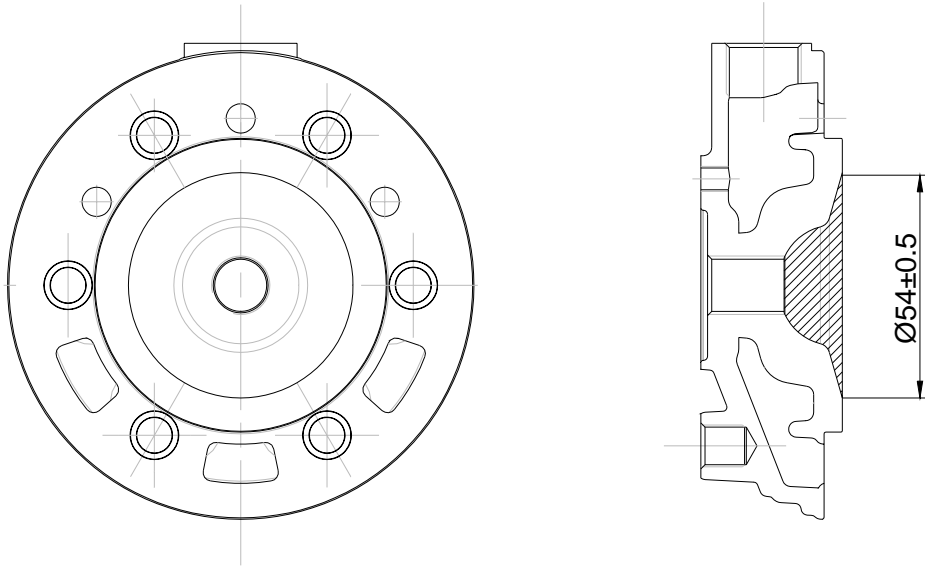
DRAWING OF THE CYLINDER BASE



CILINDER SECTION VIEW

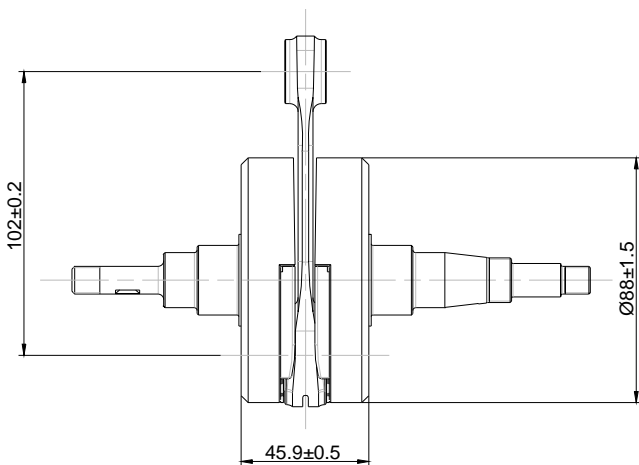


DRAWING OF THE CYLINDER HEAD AND COMBUSTION CHAMBER



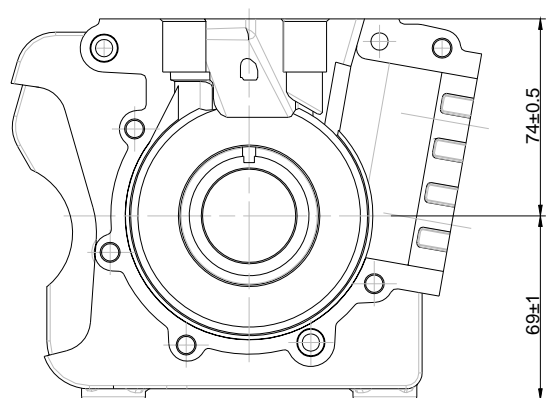
Combustion chamber volume = 7.5cc minimum

DRAWING OF THE CRANKSHAFT




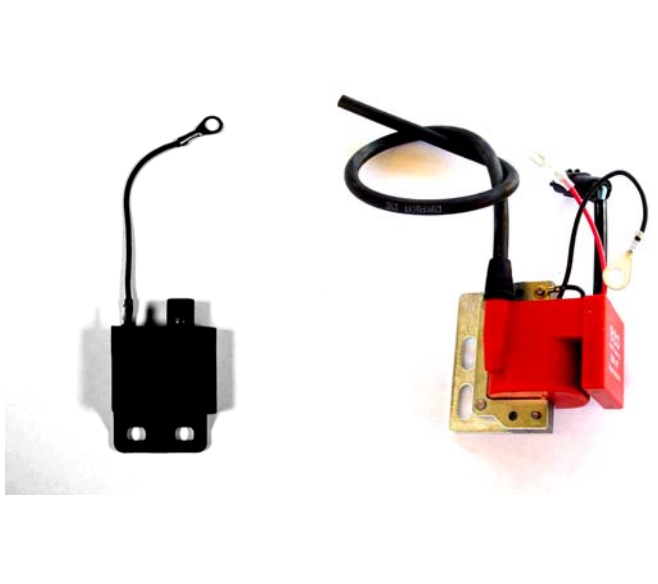
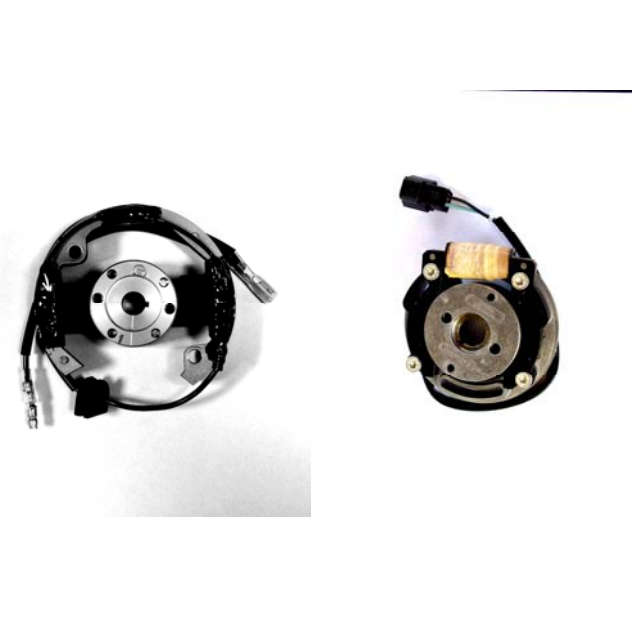
Weight= 1860g ± 280g

DRAWING OF THE INSIDE SUMP





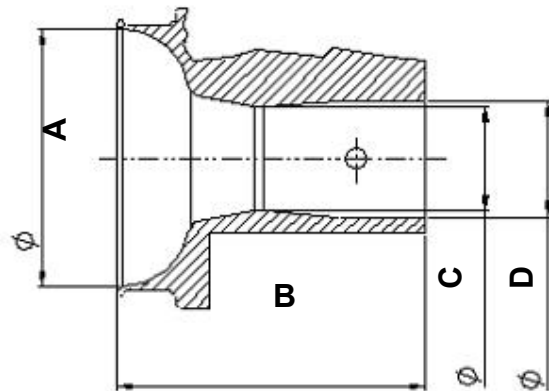
IGNITION	
Manufacturer	SELETTRA - PVL
Model Number	
Rotation	COUNTERCLOCKWISE
Description	

PHOTO OF IGNITION	PHOTO OF COIL
	
	

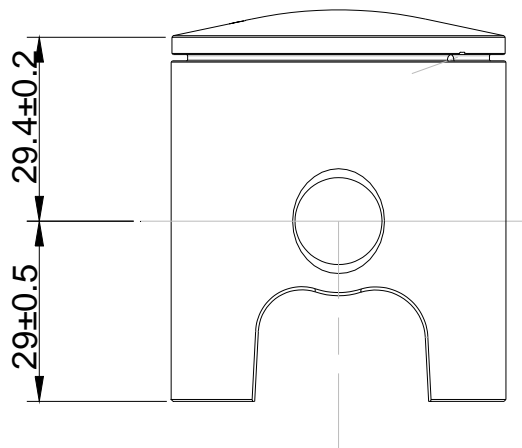


CARBURETOR DIMENSION

Item	Measure	Tolerance
A	60mm	±1mm
B	74mm	±1.5mm
C	24mm	±0.3mm
D	27.1mm	±0.5mm

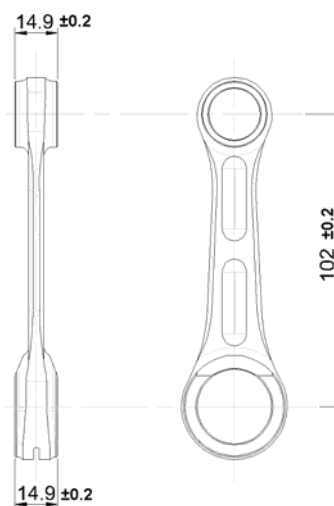


PISTON



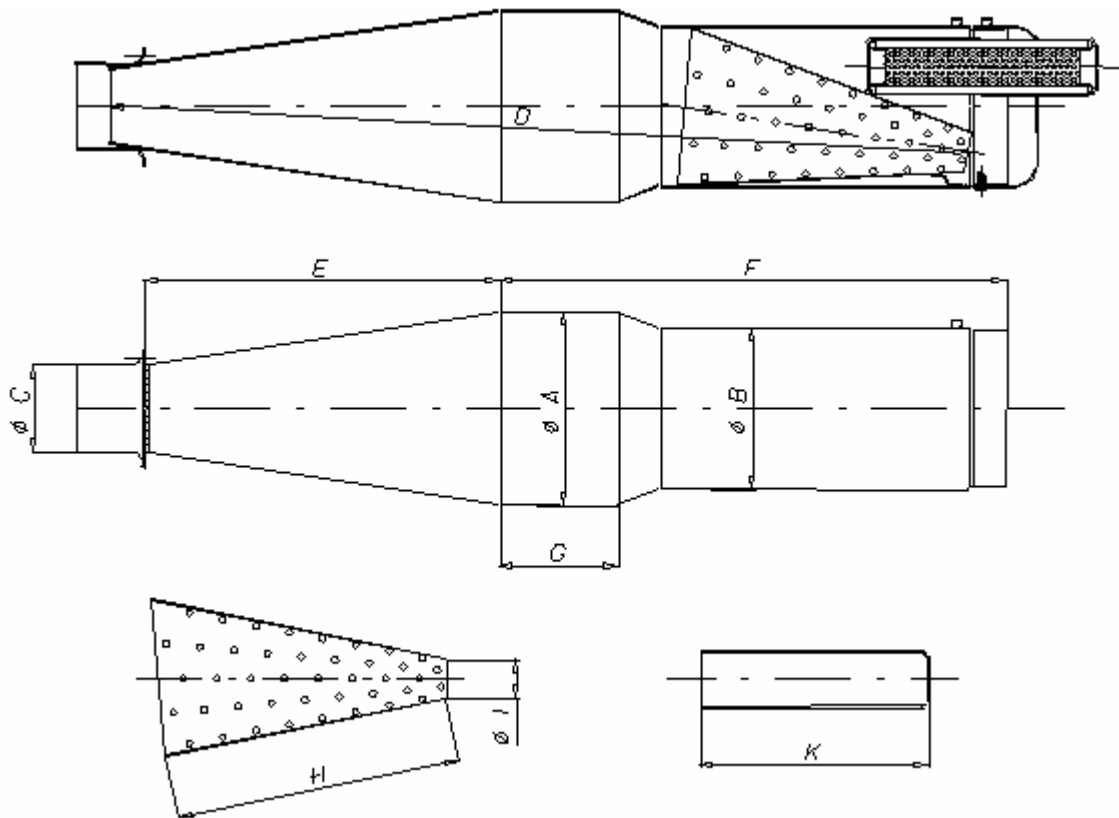
Weight = 125g ± 19g

CONNECTING ROD



Weight = 130g ± 20g

DRAWING OF THE SILENCER AND IT'S COMPONENTS

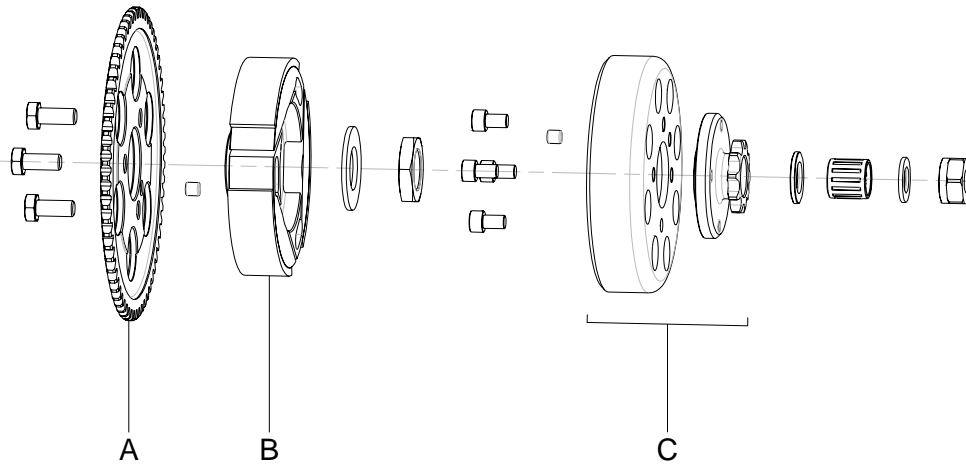


The end parts of the silencer must have two soldered pairs of lugs (one pair at the top and one pair at the bottom) to allow for fixing of seals by the Organizer so that the silencer may be opening during the competition.

Measurements:

A: 112 \pm 5mm
 B: 100 \pm 5mm
 C: 54 \pm 5mm
 D: 485 \pm 5mm
 E: 172 \pm 5mm
 F: 218 \pm 5mm
 G: 100 \pm 5mm
 H: 171 \pm 5mm
 I: 21 \pm 5mm
 K: 130 \pm 5mm

DRAWING OF THE CLUTCH



Item weight and tolerance: A= 170g±50g ; B= 420±70g ; C= 280g±50g