



Homologeringsdokument

Vortex Super ROK



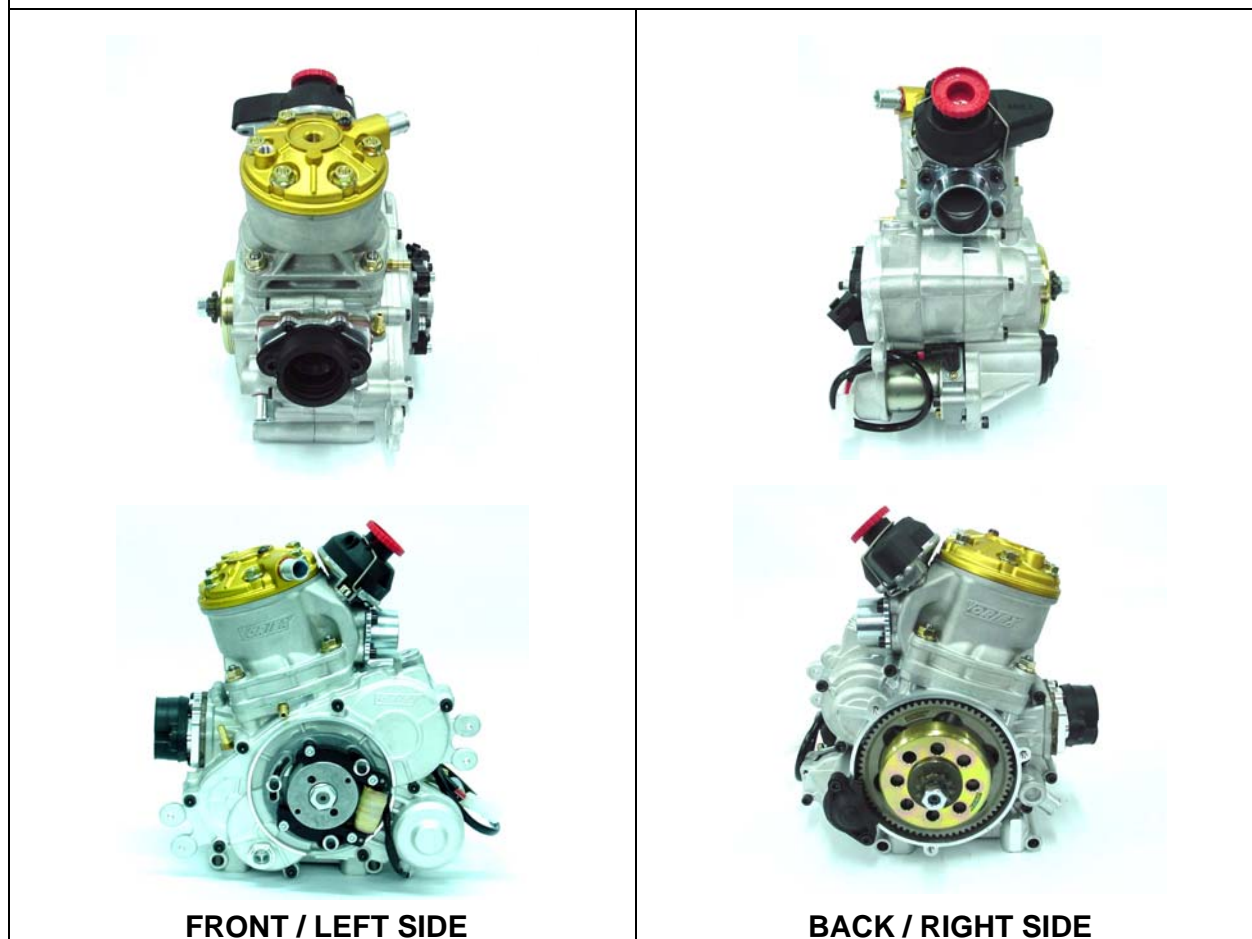
Homologeringsperiode
01.04.2007 – 31.12.2009

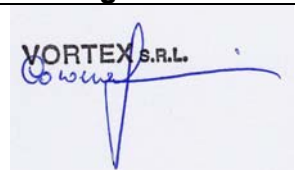


Førerlisensnummer:

VORTEX s.r.l. Via Scarpone, 39 I - 27100 PAVIA	HOMOLOGATION FORM for ENGINE cl. 125 cc.	Form.
		N. OMOL.
Manufacturer	VORTEX s.r.l.	
Make	VORTEX s.r.l.	
Model	SUPER ROK	
Inlet type	REED VALVE	
Number of pages	7	

PICTURE OF ENGINE



Official TAG Segnature and Stamp	Importer Segnature and Stamp
	



TECHNICAL INFORMATION		
A	CHARACTERISTICS	
	Measurement	Tollerances
Volume of cylinder	123.99	
Original bore	54.07	
Theoretical maximum bore	54.28	
Stroke	54	± 0.20 mm
Cooling system	Liquid cooled	
Number of carburation systems	1	
Number of transfer ports/ducts, cylinder/sump	5/3	
Number of exhaust ports/ducts	3	
Shape of combustion chamber	Spherical with squish	
Length between axes of the Connecting rod	102	± 0.20 mm
Minimum weight of connecting rod	110g	± 10g
Volume of combustion chamber	9.5 cc	
Type of bearings and size	Big End of Rod Bearing= 20x26x15 Little End of Rod Bearing= 14x18x17 Crankshaft Bearing= 6206 C4 30x62x16	

B	OPENING ANGLES	
		Tollerances
Exhaust	194°	MAX
Of exhaust ports / ducts	179°	MAX

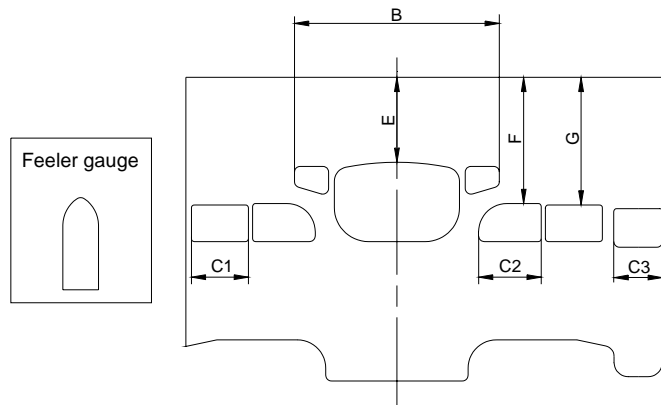
C	LIST OF ACCESSORIES INCLUDED	
Carburetor	Dellorto or butterfly carburettor with max venturi 36mm	
Generator for battery charging	External battery charger	
Electric starter	On board	
Exhaust with flex		

D	MATERIAL	
Cylinder	AL – SI ALLOY	
Connecting rod	NI – CR – MO STEEL	
Crankshaft	NI – CR – MO STEEL	
Head	AL – SI ALLOY	
Liner	IRON	
Crankcase	AL – SI ALLOY	
Piston	AL – SI ALLOY	
Piston Ring	STEEL OR IRON	



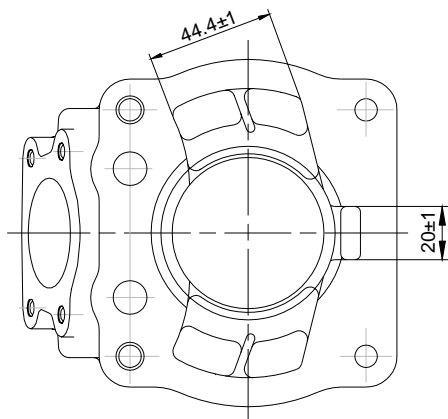
DRAWING OF THE CYLINDER DEVELOPMENT

B	54 ± 0.5
C1	23.2 ± 0.5
C2	21.8 ± 0.5
C3	26 ± 0.5
E	194°
F	135°
G	131°

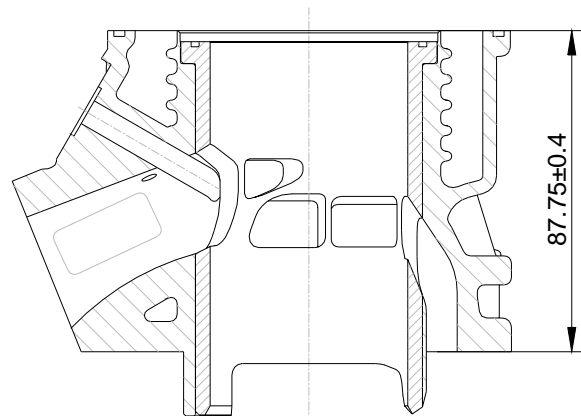


Angular reading by 0.2mm feeler gauge

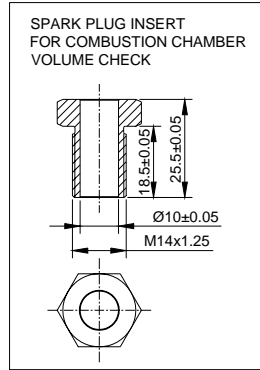
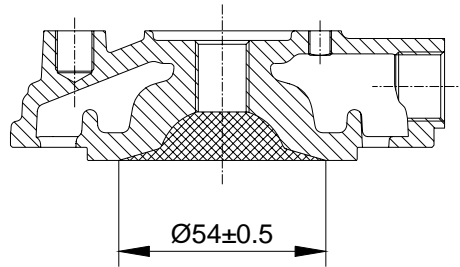
DRAWING OF THE CYLINDER BASE



CILINDER SECTION VIEW

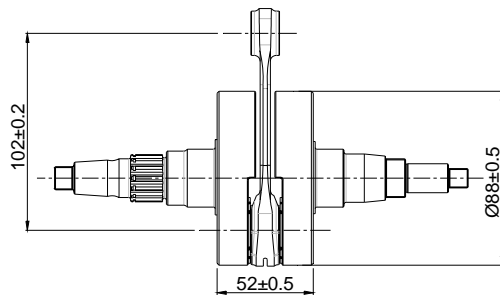


DRAWING OF THE CYLINDER HEAD AND COMBUSTION CHAMBER



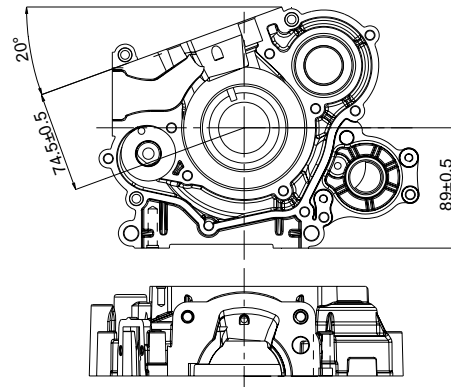
Combustion chamber volume = 9.5cc

DRAWING OF THE CRANKSHAFT



Weight= 2175g ± 326g

DRAWING OF THE INSIDE SUMP

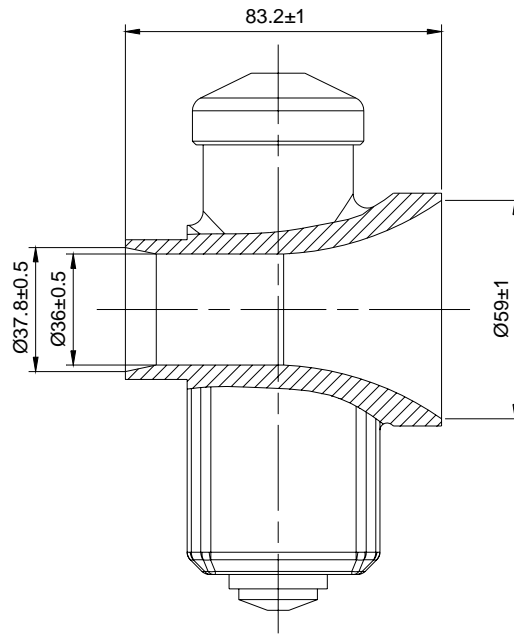


IGNITION	
Manufacturer	PVL
Model Number	1036/980/500-192
Rotation	CUNTERCLOCKWISE
Description	

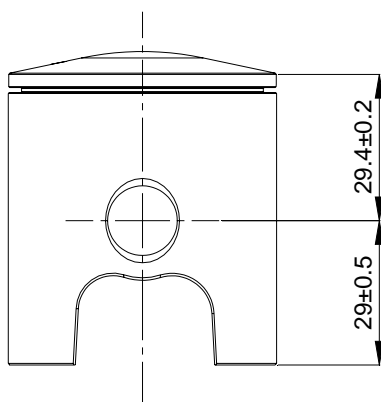
PHOTO OF IGNITION	PHOTO OF COIL
	 <div data-bbox="1240 646 1516 827" style="position: absolute; top: 10px; right: 10px; border: 1px solid gray; border-radius: 10px; padding: 5px;">  </div>
	



CARBURETOR DIMENSION

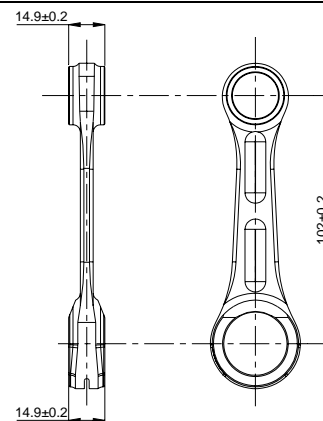


PISTON



Weight= 125g \pm 19g

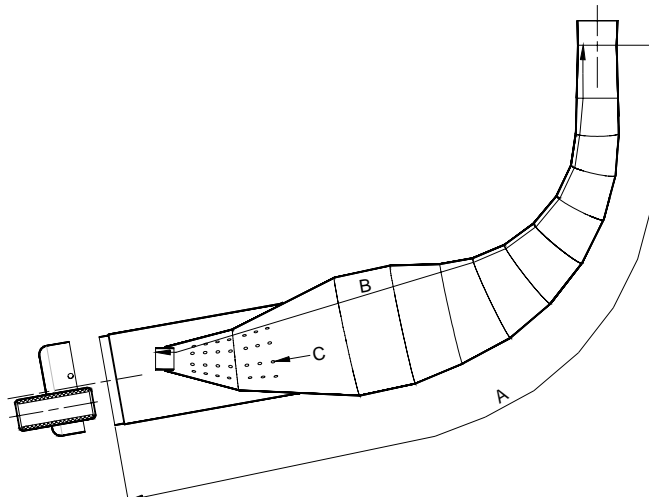
CONNECTING ROD



Weight= 130g \pm 20g



DRAWING OF SILENCER AND IT'S COMPONENTS



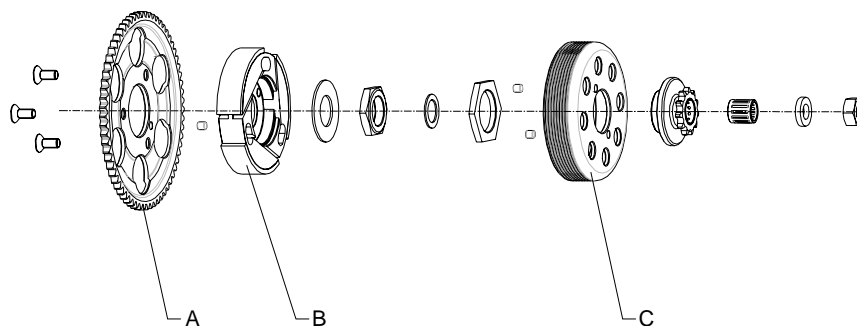
External chord reading: A= $825 \pm 7\text{mm}$

Internal chord reading: B= $655 \pm 7\text{mm}$

Number of holes: C= 56

The end parts of the silencer must have two soldered pairs of lugs (one pair at the top and one pair at the bottom) to allow for fixing of seals by the Organizer so that the silencer may be opening during the competition.

DRAWING OF THE CLUTCH



Item weight and tolerance: A= $229\text{g} \pm 30\text{g}$; B= $407\text{g} \pm 30\text{g}$; C= $254\text{g} \pm 30\text{g}$