



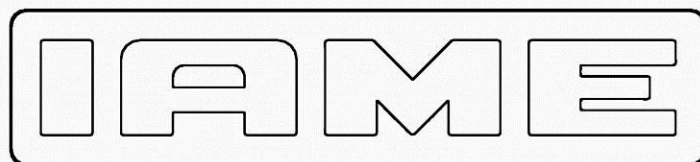
## NORGES BILSPORTFORBUND

### HOMOLOGERINGS DOKUMENT IAME MINI

Homologeringsnr.  
NBF-30/M/24

Utgave 01/2017


Produsent	IAME S.P.A – ZINGONIA (BG), ITALIA	
Merke	PARILLA	
Modell	NorSwift 60	
Homologeringsperiode	1. Januar 2015 - 31. Desember 2024	12(+1) Sider

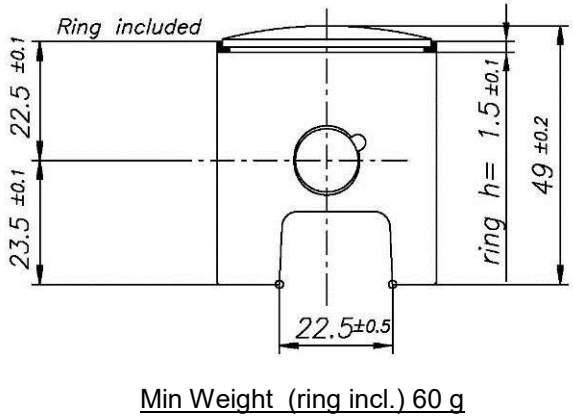
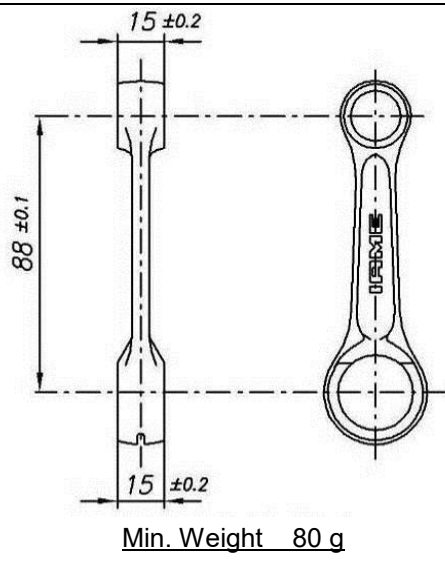


# Parilla NORSWIFT 60cc

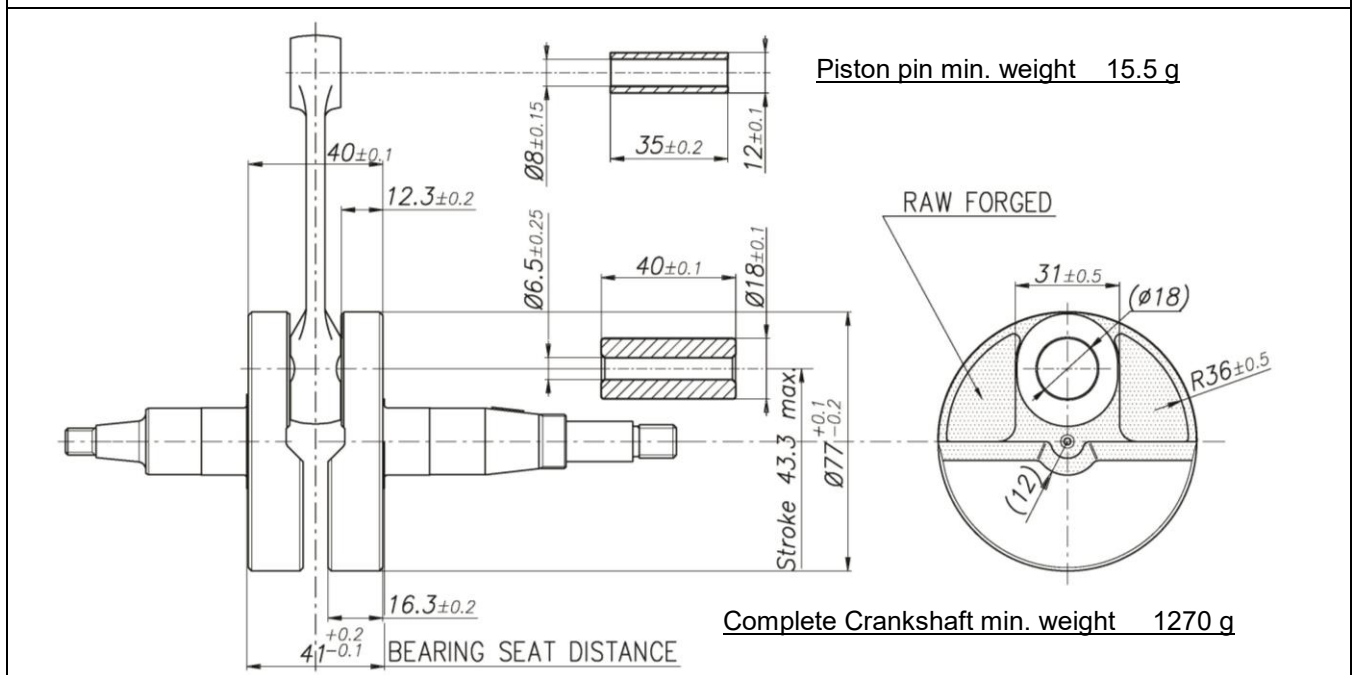


## FEATURES

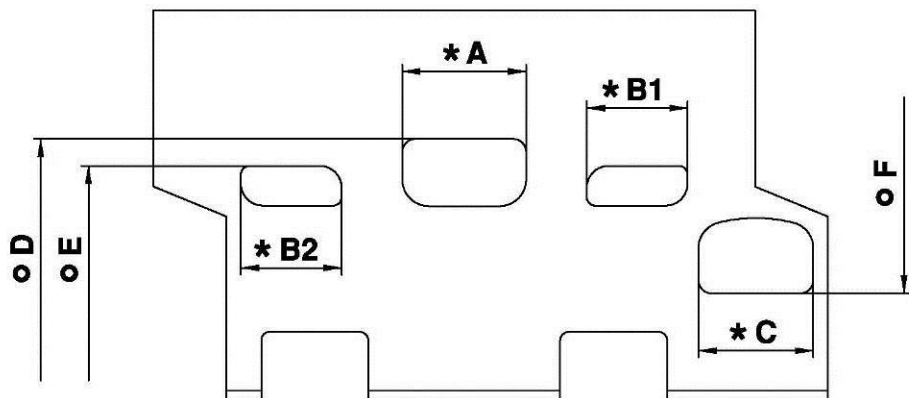
		Cylinder volume		59.42 cm <sup>3</sup> (60.00 cm <sup>3</sup> max.)
		Bore		41.80 mm
		Max. theoretical bore		42.00 mm
		Stroke		43.30 mm max.
		Cooling system		Air
		Inlet system		Piston Port
		Number of carbs		1
Tillotson Carburetors HL	334B Ø19.8mm 394A Ø16mm	Transfers n. cylinder/crankcase	2/2	
Number of piston rings	1	Inlet / exhaust ports number	1 / 1	
Big end conrod ball-bearing diam.	18x24x15	Combustion chamber shape	Spherical	
Crankshaft ball-bearing diam.	20x47x14	Selettra ignition	Cod. A-61953-C	
Small end conrod ball-bearing diam.	12x16x16	Distance between Conrod Centers	88 mm	

DESCRIPTION OF THE MATERIAL		PISTON	
Conrod material	Steel	 <p>Min Weight (ring incl.) 60 g</p>	
Crankshaft material	Steel		
Head material	Aluminium		
Cylinder material	Aluminium		
Liner material	Cast Iron		DISTANCE BETWEEN CONROD CENTERS
Crankcase material	Aluminium		 <p>Min. Weight 80 g</p>
Piston material	Aluminium		
Piston rings material	Cast Iron		
Exhaust muffler material	Sheet-steel		
Ball-bearings	6204 type		

### CRANKSHAFT



# CYLINDER DEVELOPMENT

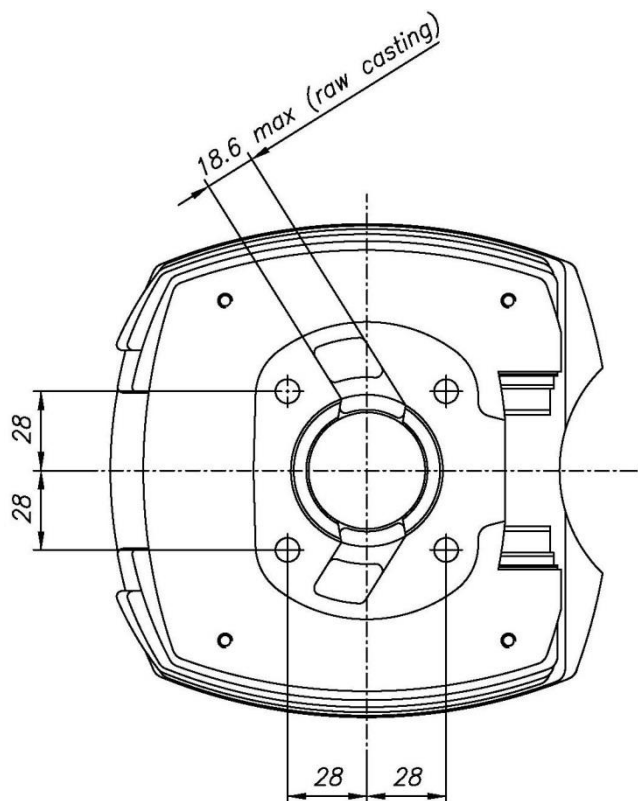


A	≤ 28.5 mm
B1 = B2	≤ 22.3 mm
C	≤ 26.5 mm
D	155.5° ± 1°
E	115.5° ± 2°
F	144.0° ± 1°

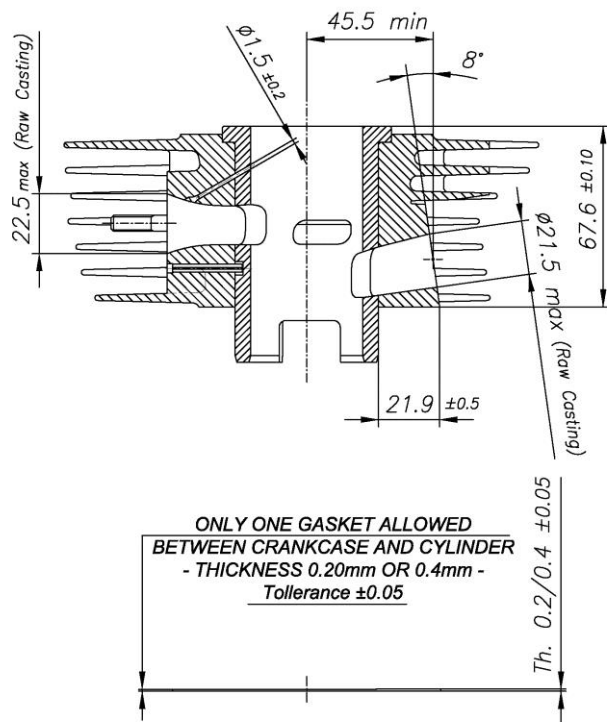
\* CHORDAL READING

o ANGULAR READING BY INSERT A 0.2x5 mm GAUGE

## CYLINDER BASE VIEW



## CYLINDER CROSS SECTION VIEW



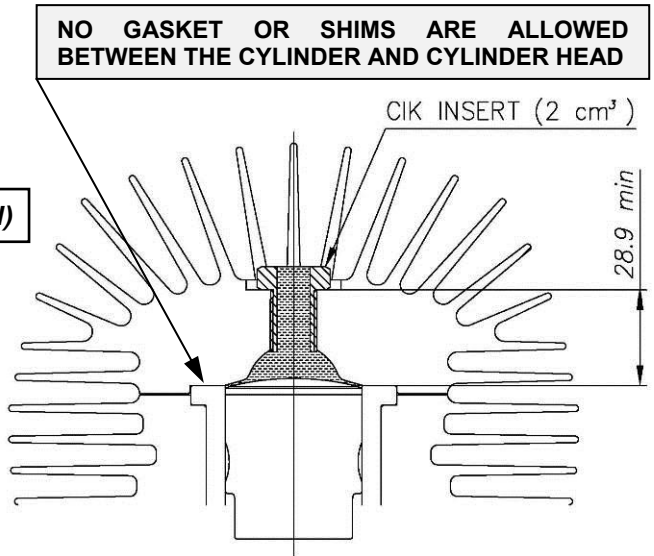
## COMBUSTION CHAMBER VIEW

**COMBUSTION CHAMBER VOLUME = 6.1 cm<sup>3</sup> min.**

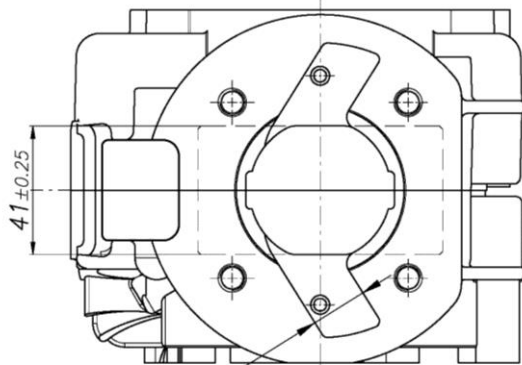
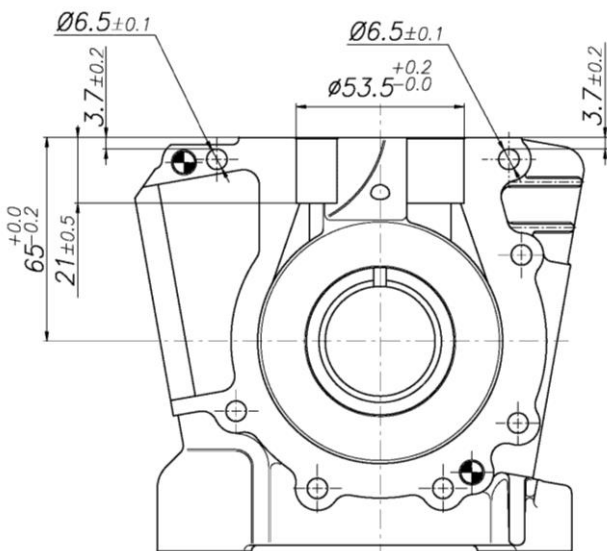
**SQUISH MIN.= 0.50 mm (measured with Ø1.6mm TIN)**

Combustion chamber volume in the cylinder head  
(with Volumeter and CIK insert):

**7.4 cm<sup>3</sup> min**



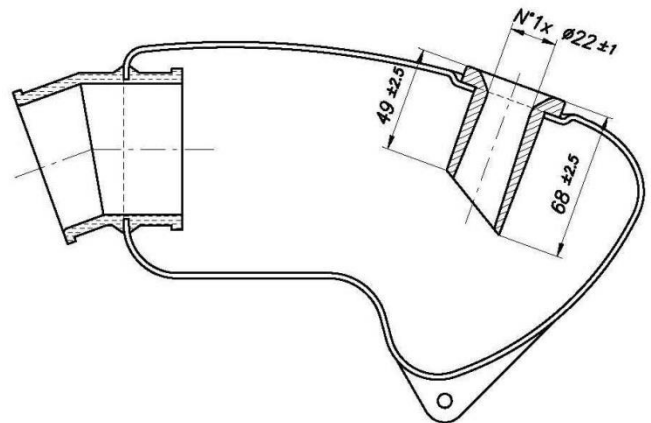
## CRANKCASE INSIDE VIEW



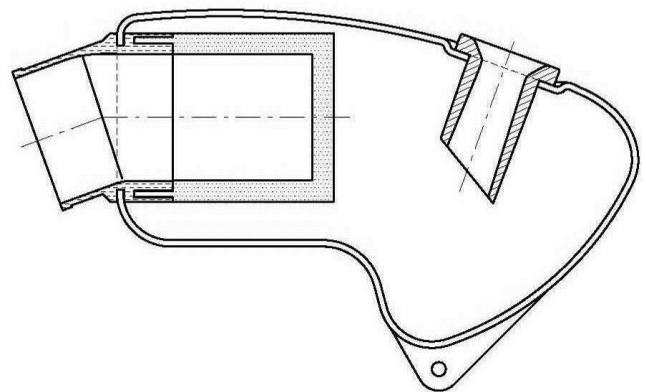
18.3 max  
(RAW CASTING)

## INLET SILENCER

**(CSAI Hom. N° 01/SA/14)**

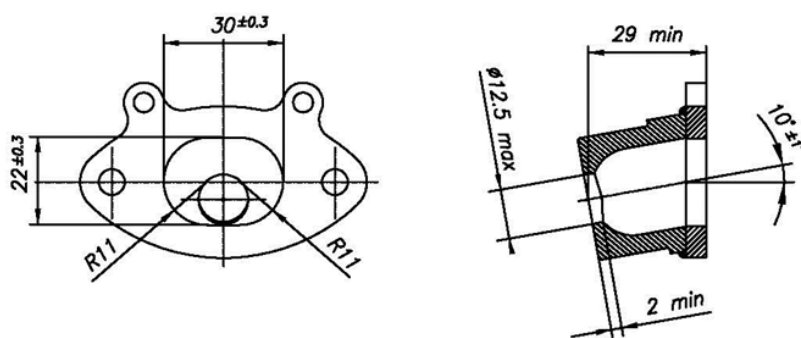
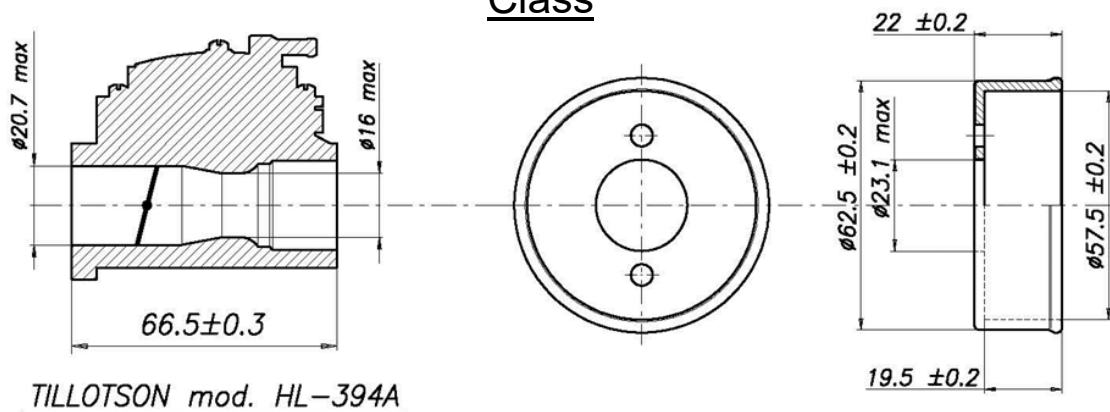


**IN ALTERNATIVE (OPTIONAL)**

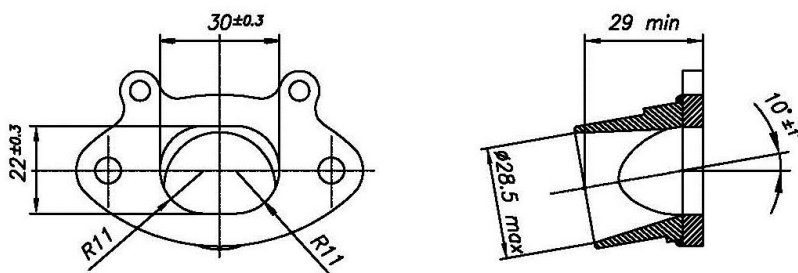
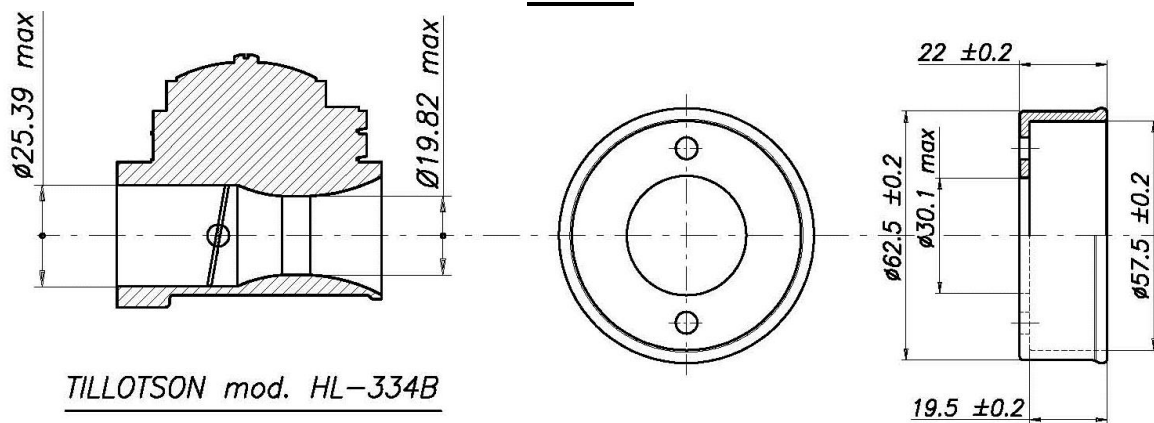


CARBURETTORS, INLET SILENCER SUPPORTS AND EXHAUST MANIFOLDS  
FOR "MINI" VERSION AND "CADETTI" VERSION

CADETTI  
Class

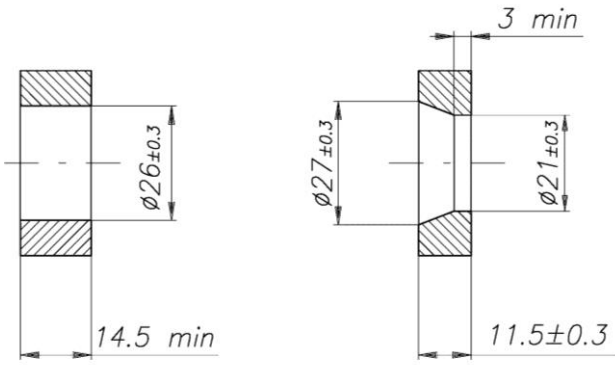


MINI  
Class

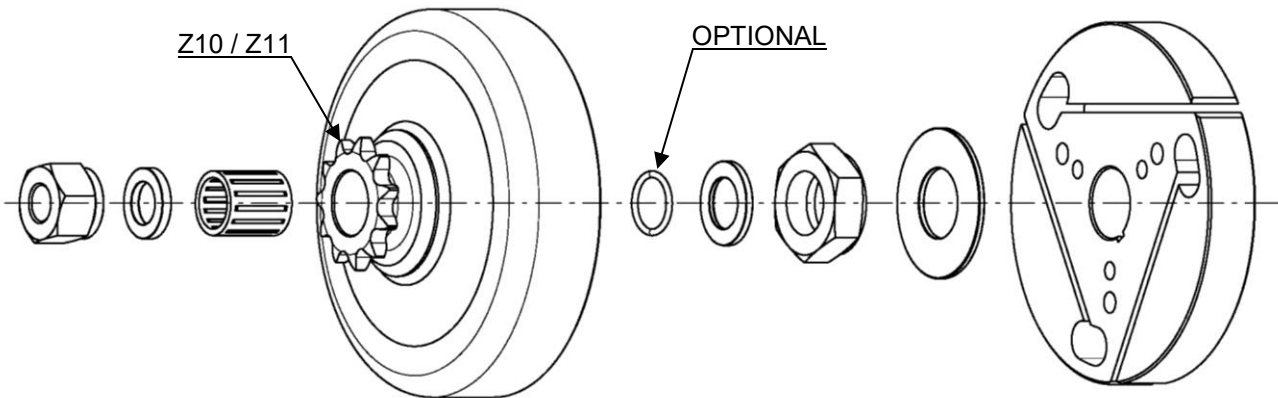


THERMAL SPACER

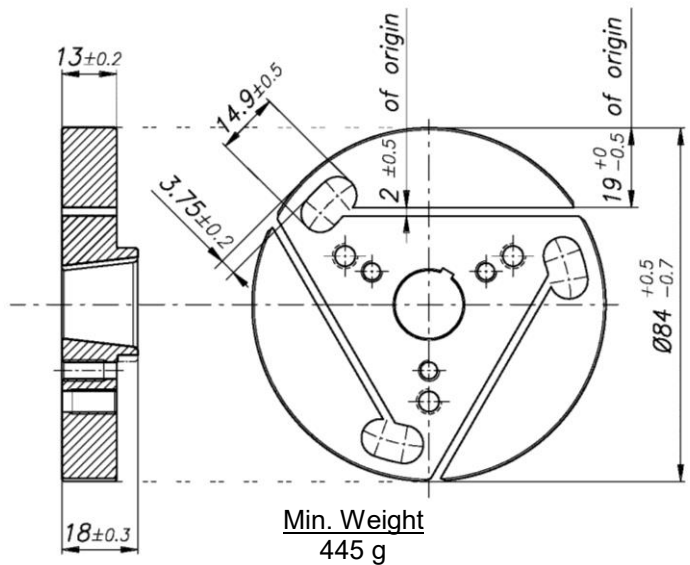
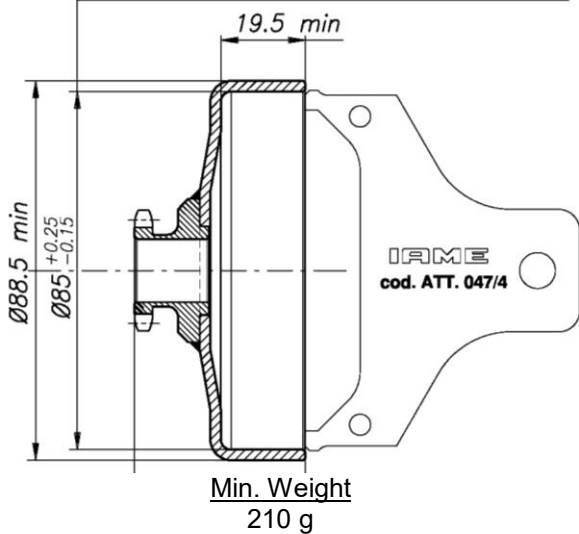
PHOTO IDENTIFICATION MARKING  
SPONGE FILTER (OPTIONAL)



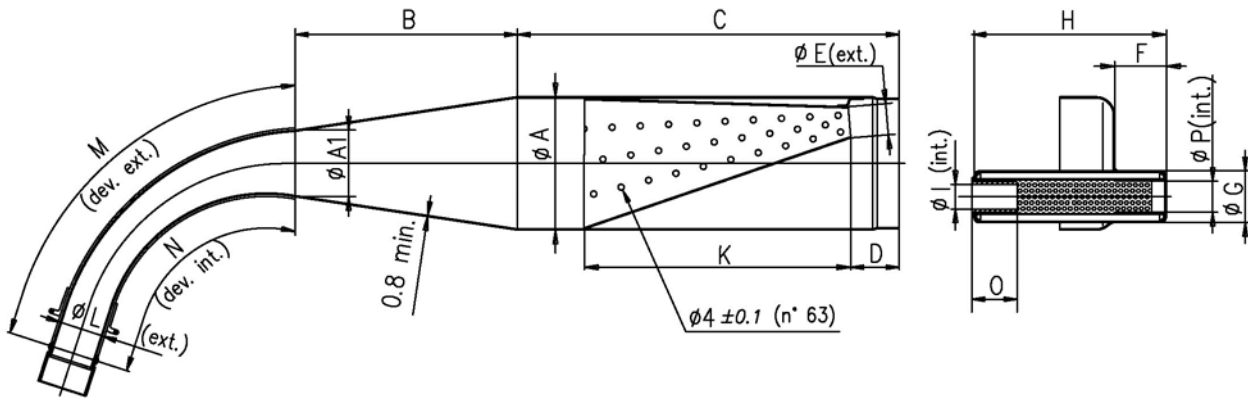
DESCRIPTION OF THE CLUTCH



The template "N.P." must be used in multiple directions.  
In case it happen that in a direction "PASS" and another,  
"DO NOT PASS", the clutch drum is considered regular.



# THERMAL SPACER - EXHAUST MUFFLER VIEW AND DIMENSIONS



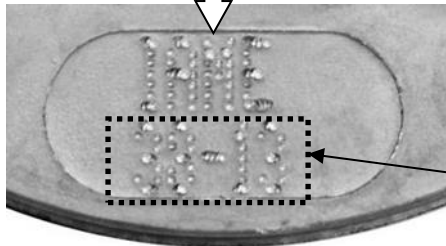
A: $\frac{90 \pm 1.5}{}$	C: $\frac{260 \pm 3}{}$	F: $\frac{35 \pm 2}{}$	I: $\frac{17 \text{ max.}}{}$	M: $\frac{240 \pm 3}{}$	P: $\frac{21 \pm 1}{}$
A1: $\frac{45 \pm 1}{}$	D: $\frac{30 \pm 1.5}{}$	G: $\frac{35 \pm 1}{}$	K: $\frac{181 \pm 3}{}$	N: $\frac{190 \pm 3}{}$	
B: $\frac{150 \pm 3}{}$	E: $\frac{20 \pm 1}{}$	H: $\frac{132 \pm 2}{}$	L: $\frac{31 \pm 1.5}{}$	O: $\frac{30 \text{ min.}}{}$	

**Min. Weight**  
 1250 g

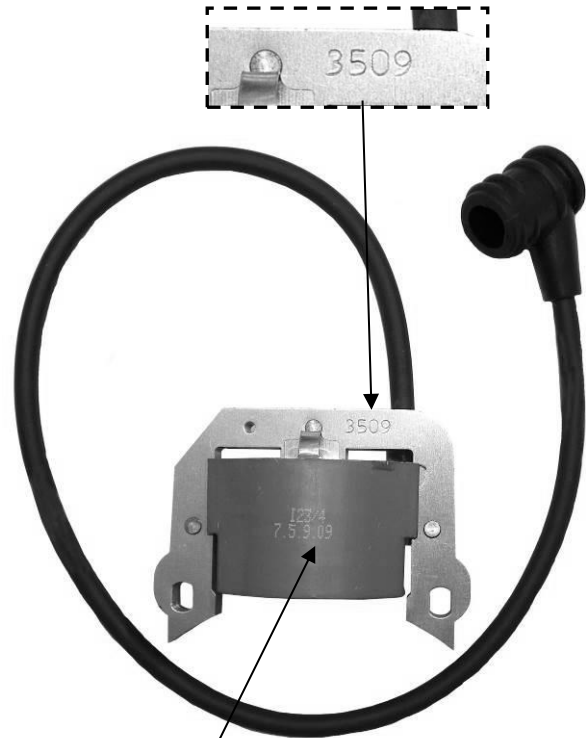
## IGNITION PHOTO IDENTIFICATION MARKING



Min Weight  
362 g

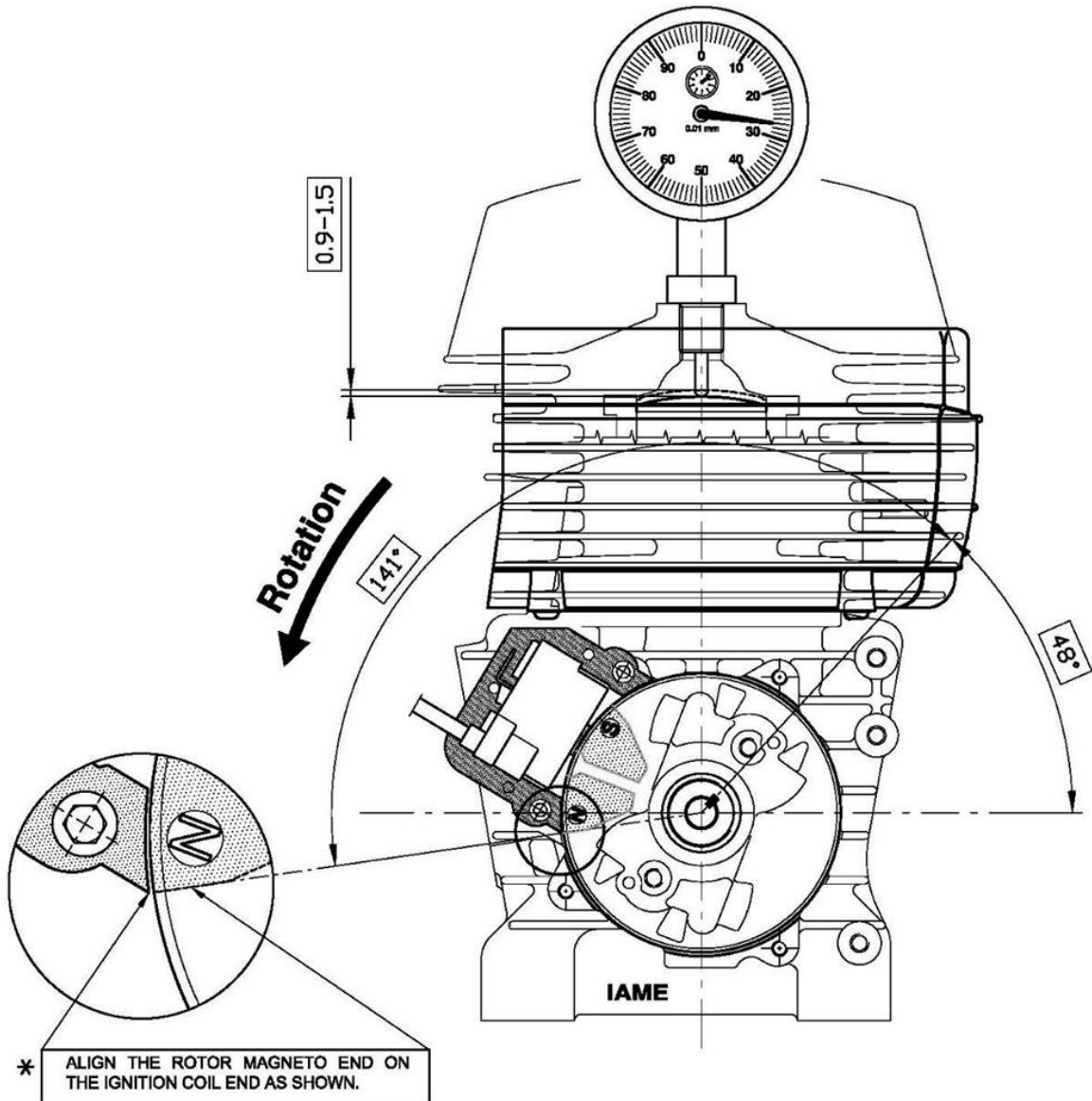


**VARIABLE**

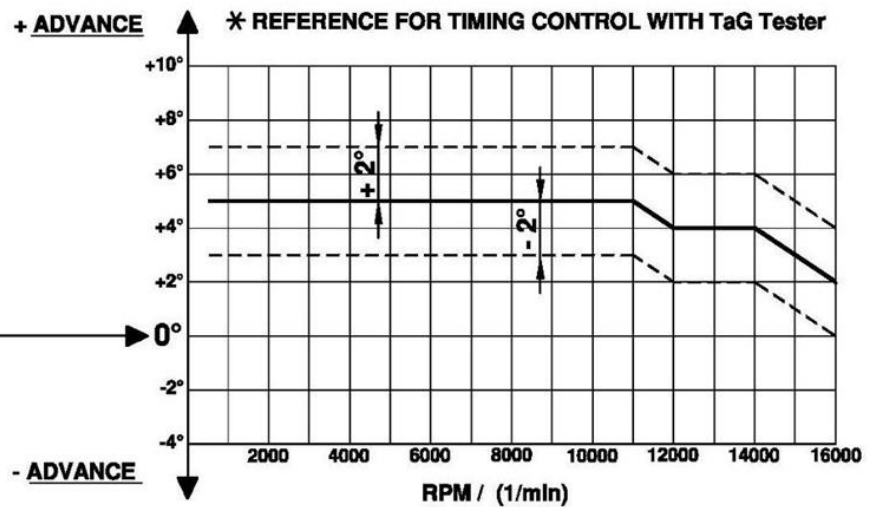




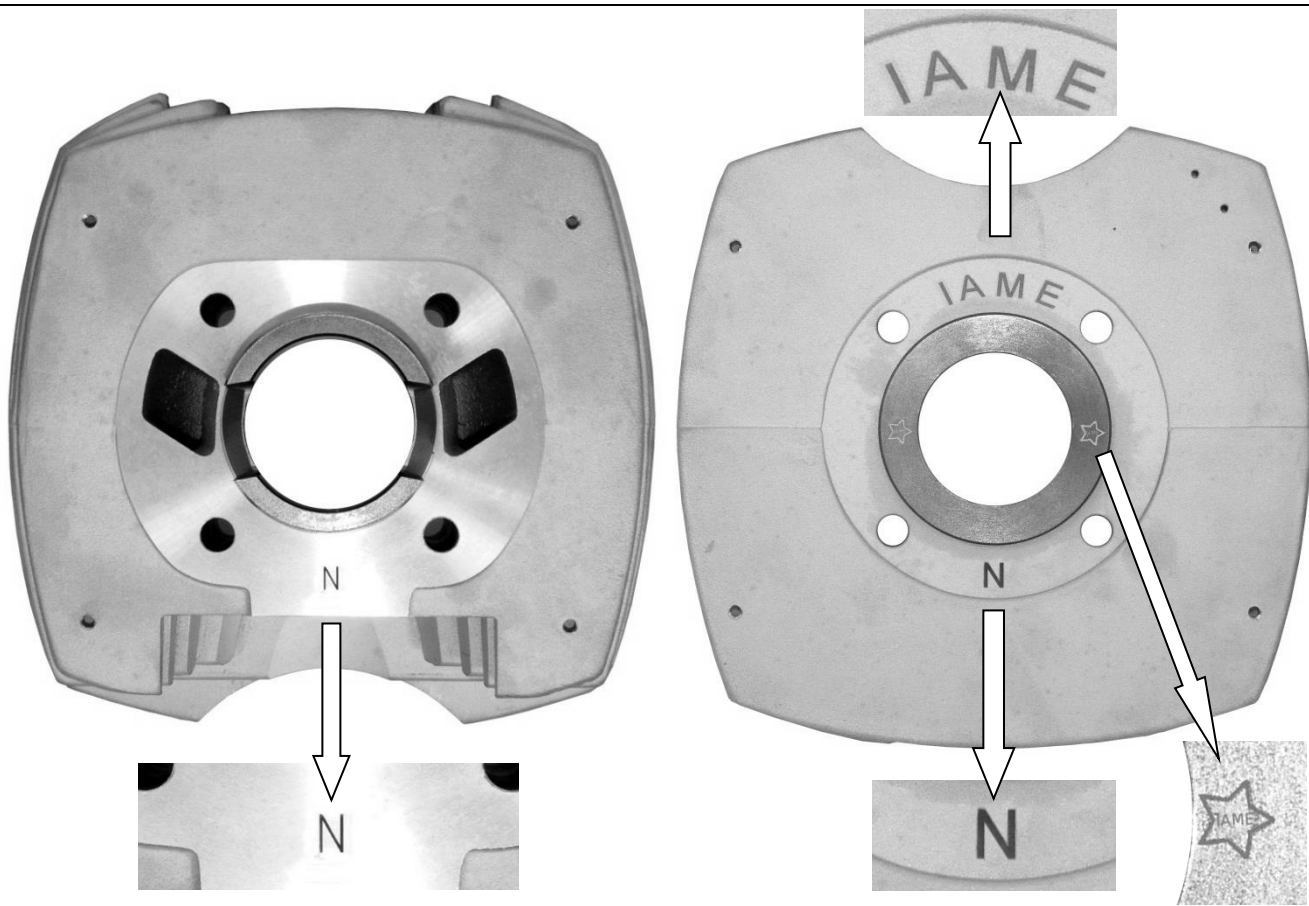
# SCHEME FOR ADVANCE CONTROL



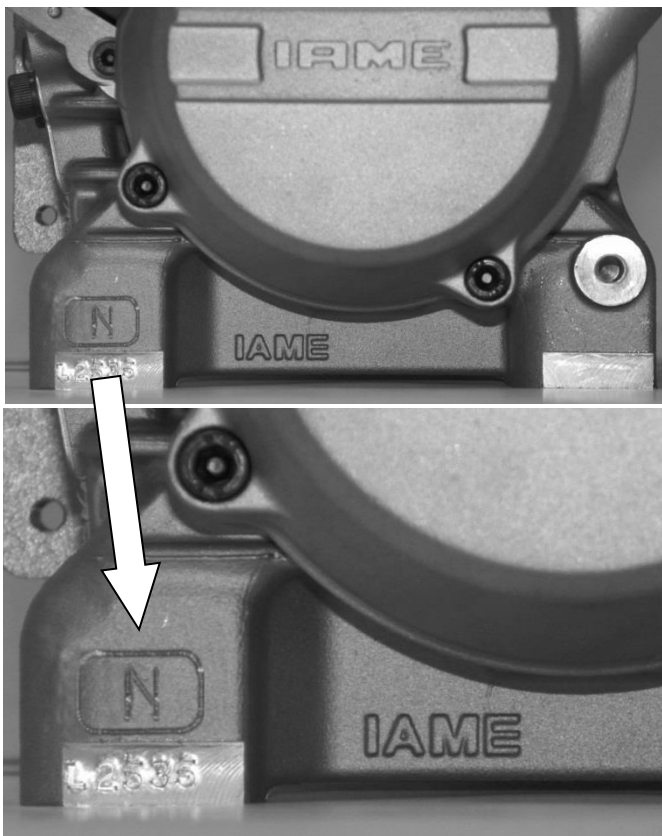
## ADVANCE CURVE GRAPHS



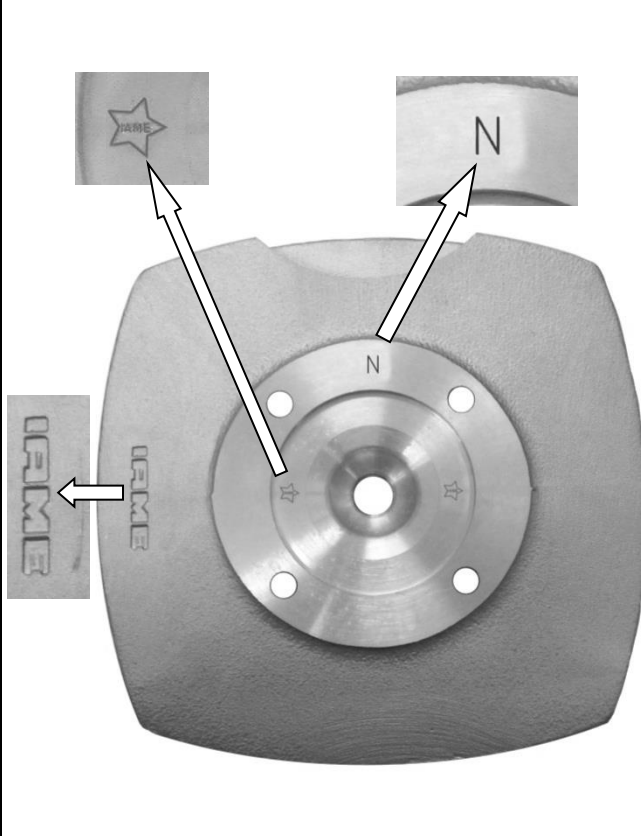
# CYLINDER IDENTIFICATION MARKING



## CRANKCASE IDENTIFICATION MARKING



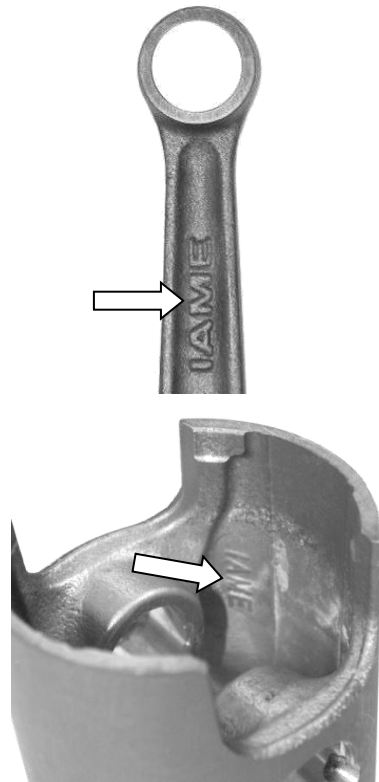
## HEAD IDENTIFICATION MARKING



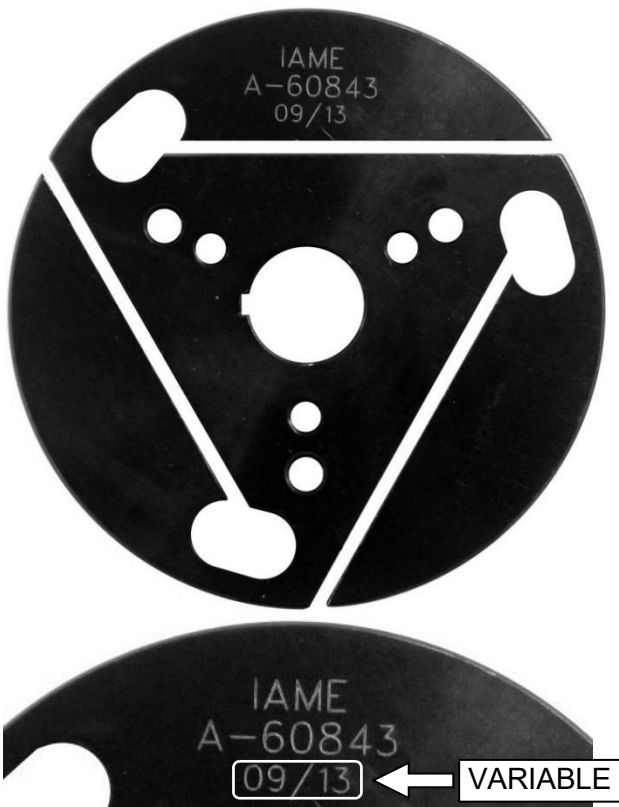
EXHAUST IDENTIFICATION MARKING



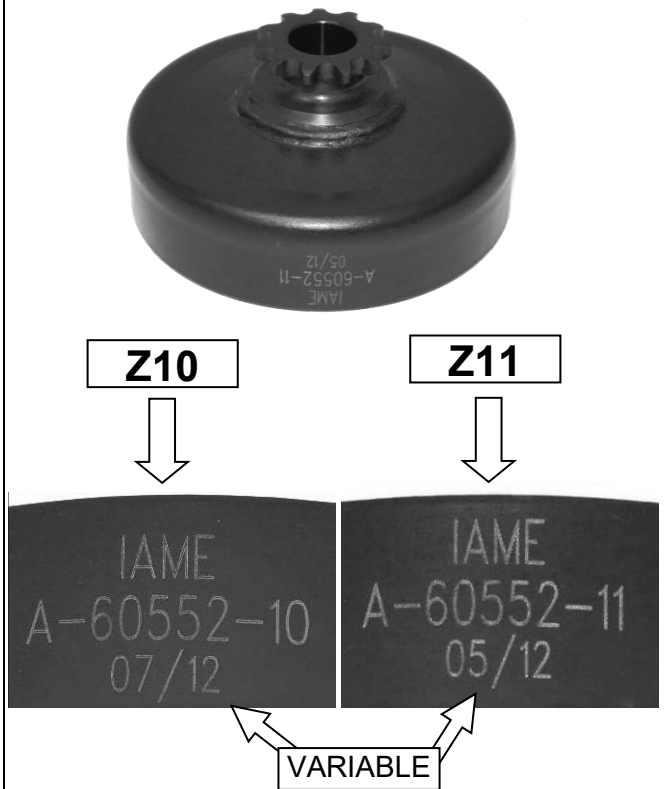
CONROD / PISTON IDENTIFICATION MARKINGS



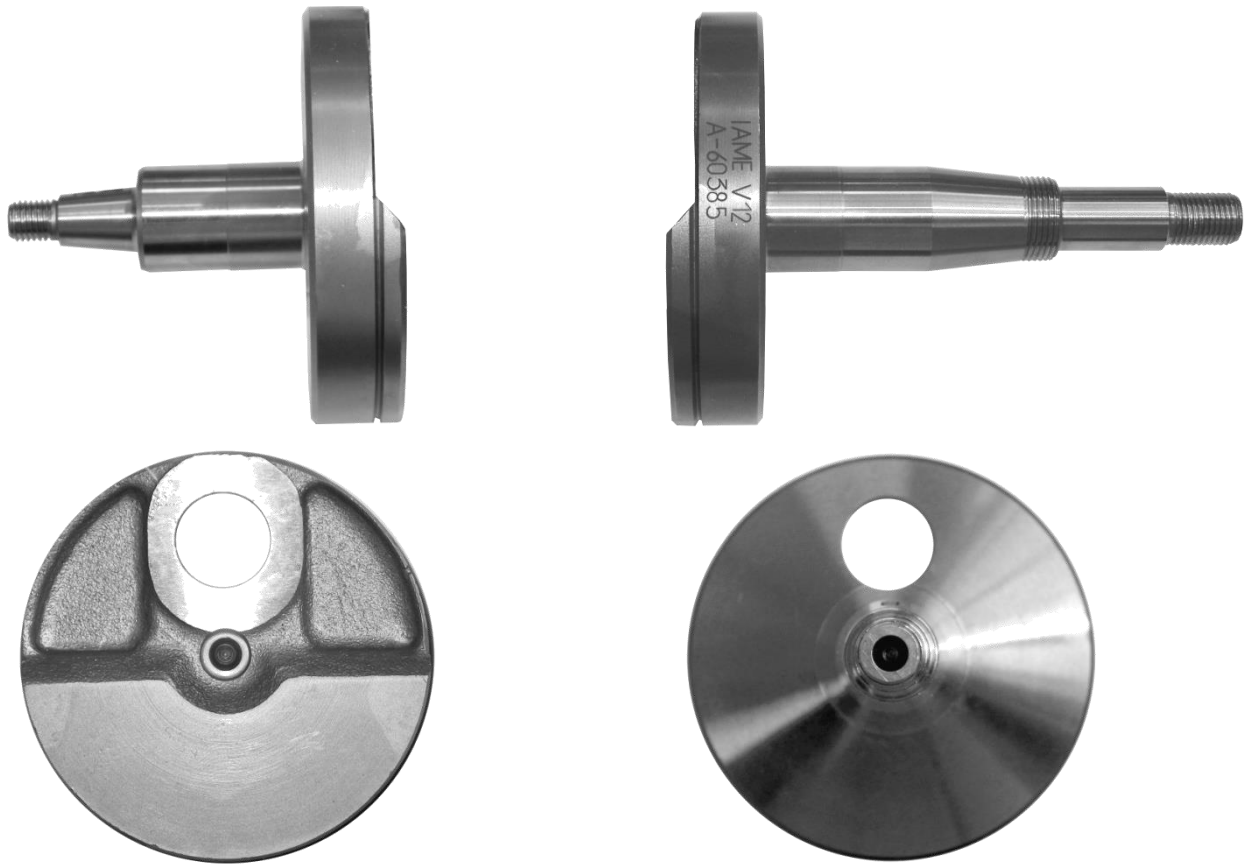
CLUTCH HUB IDENTIFICATION MARKING



CLUTCH DRUM IDENTIFICATION MARKING

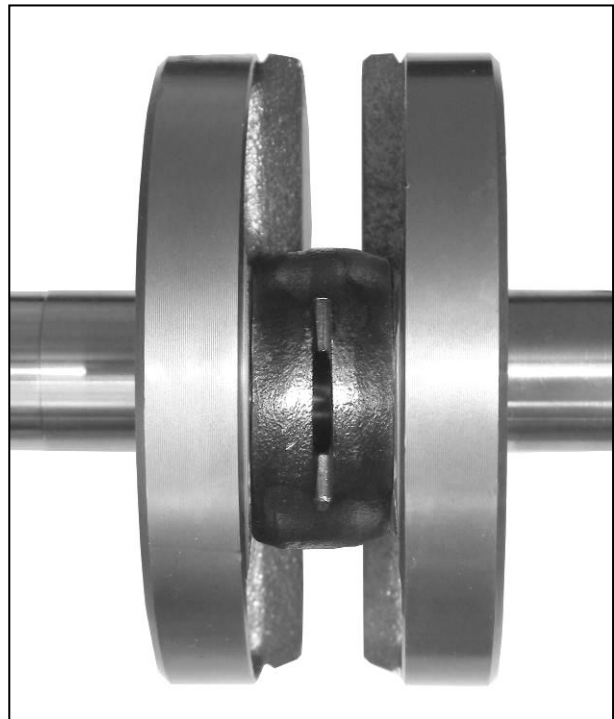


# CRANKSHAFT PHOTOS



CRANKSHAFT IDENTIFICATION MARKINGS

PARTICULAR OF COMPLETE CRANKSHAFT



# BALL BEARING IDENTIFICATION MARKING

