



NORGES BILSPORTFORBUND

HOMOLOGERINGSdokUMENT

Homologeringsnr.
NBF-25/M/16

Utgave 02/2015

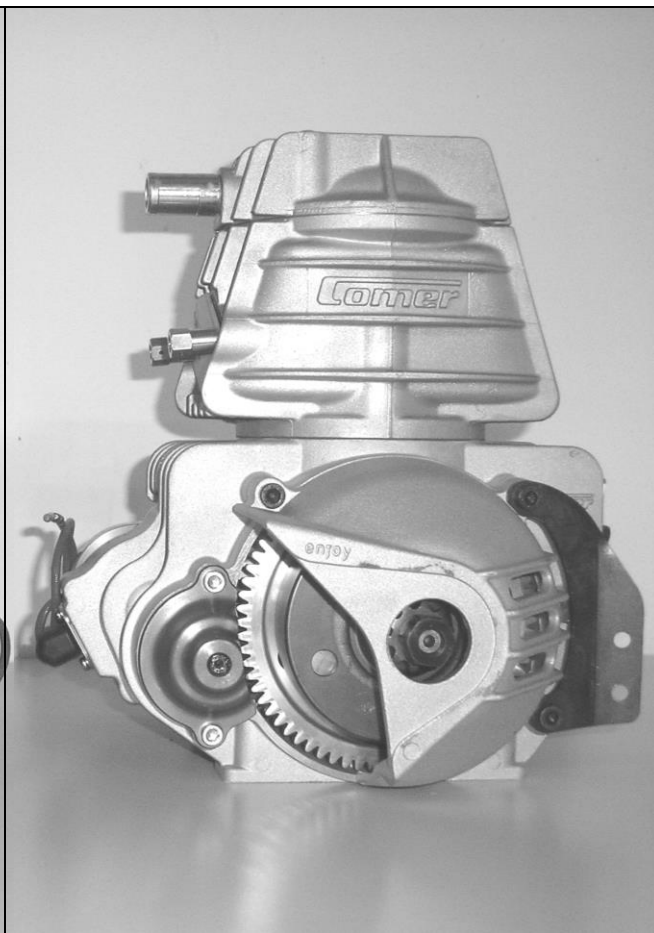
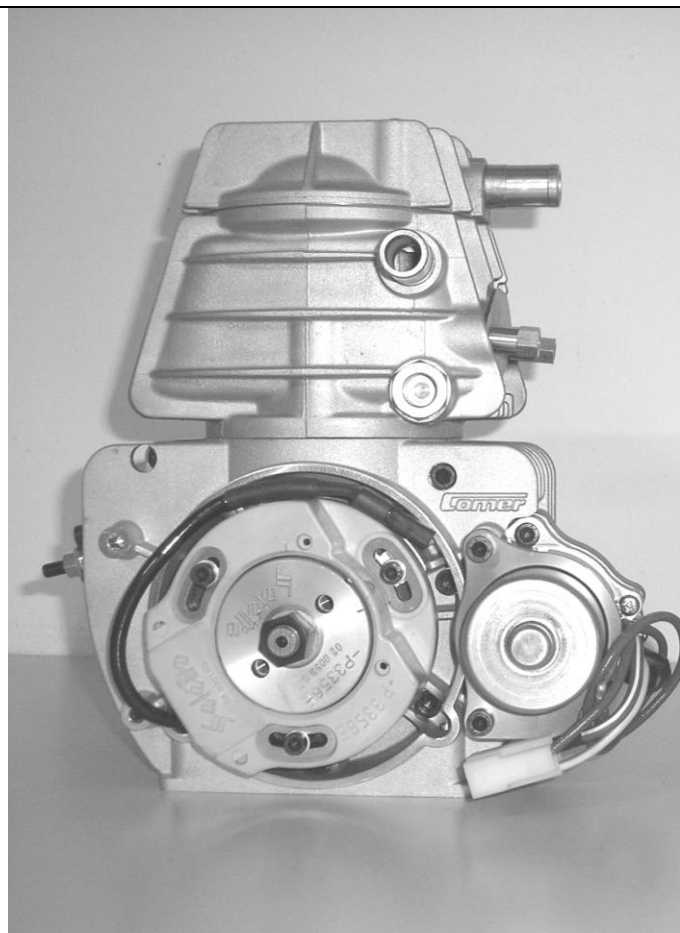
Produsent	COMER S.P.A. - (ITALY)	
Merke	COMER	
Modell	365 TAG	
Homologeringsperiode	1. Januar 2015 - 31. Desember 2016	9(+1) Sider

TECHNICAL FILE / Fiche tecnica

Trademark/Marca : **Comer**[®]

Type / Modello: 365AE

Manufacturer/Costruttore : *COMER SpA*
REGGIO EMILIA ITALY



FACTORY ORIGINAL PARTS ONLY ADMITTED
SONO AMMESSI SOLO RICAMBI ORIGINALI DI
FABBRICA

THE ENGINE MUST BE ORIGINAL
LE PARTI DEL MOTORE DEVONO ESSERE
ORIGINALI DI FABBRICA

TECHNICAL INFORMATION INFORMAZIONI TECNICHE

(National Sporting
Authority)

BORE / ALESAGGIO

54 mm

STROKE / CORSA

54 mm

CAPACITY / CILINDRATA

125 cc. MAX

Fuel - Mix 5%

Alimentazione

Ignition - Electronic "SELETTRA"

Accensione

Clutch - Centrifugal one piece

Frizione - Centrifuga monopezzo

Sproket - Z10 / Z11 P219

Pignone

Carburettor - COMER MIK \varnothing 24

Carburatore 2 or 3 jets

Starter - Electric 12V.

Avviamento

TIMBRO E FIRMA
(Federazione Nazionale)

TECHNICAL FILE

Caratteristiche tecniche

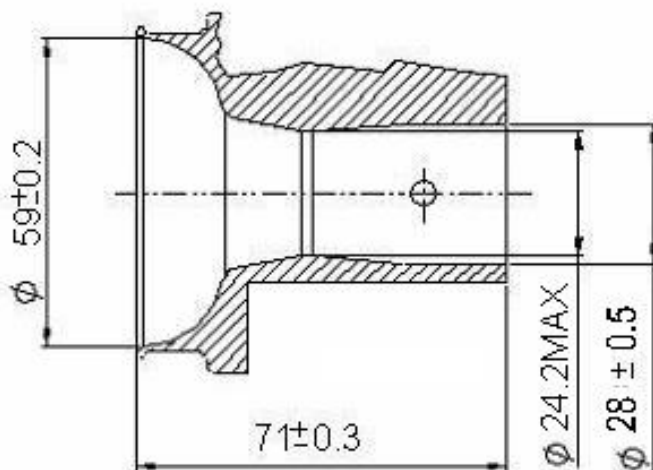
CAPACITY - CILINDRATA	125cc. MAX
BORE - ALESAGGIO	54 mm
STROKE - CORSA	54 mm
CONNECTING ROD WHEELBASE - INTERASSE BIELLA	102 mm
NUMBER OF TRANSFER LIGHTS - NUMERO LUCI DI TRAVASO	3
NUMBER OF EXHAUST LIGHTS- NUMERO LUCI DI SCARICO	1+2boosters
CARBURETTOR DIAMETER- DIAMETRO CARBURATORE	24 mm max.
IGNITION SISTEM - IMPIANTO DI ACCENSIONE	SELETTA
PISTON RING NUMBER- N° SEGMENTI	1 - "L" 2 mm
BEARINGS type 6204 C4 with nylon cage- CUSCINETTI DI BANCO 6205 C4 gabbia in poliamnide.	25x52x15
PISTON ROLLER BEARING- GABBIA PIEDE BIELLA	14x18x17
CRANKSHAFT ROLLER BEARING- GABBIA TESTA BIELLA	18x24x15

CYLINDER TECHNICAL FILE

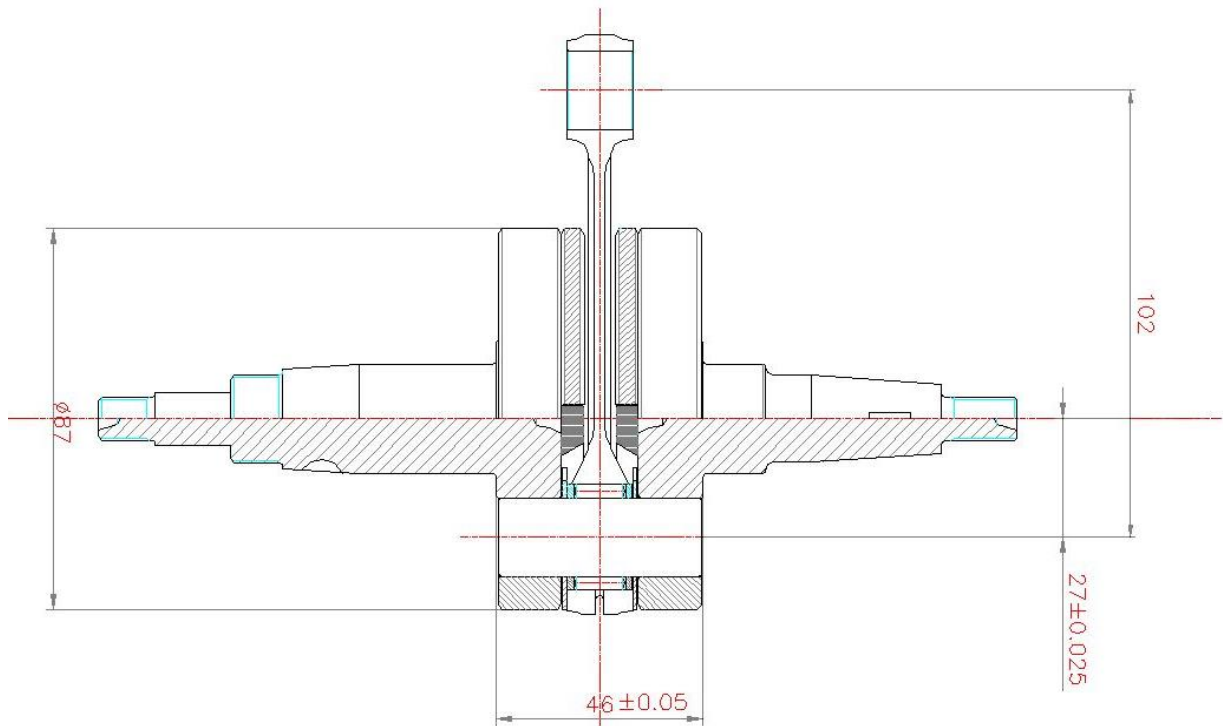
Caratteristiche tecniche cilindro

STROKE FASE	ANGEL ANGOLO	TOLERANCE TOLLERANZA
INTAKE - "TT"	134°	± 2°
TRANSFER - TRAVASI	127°	± 2°
EXHAUST- SCARICO	177°	± 2°

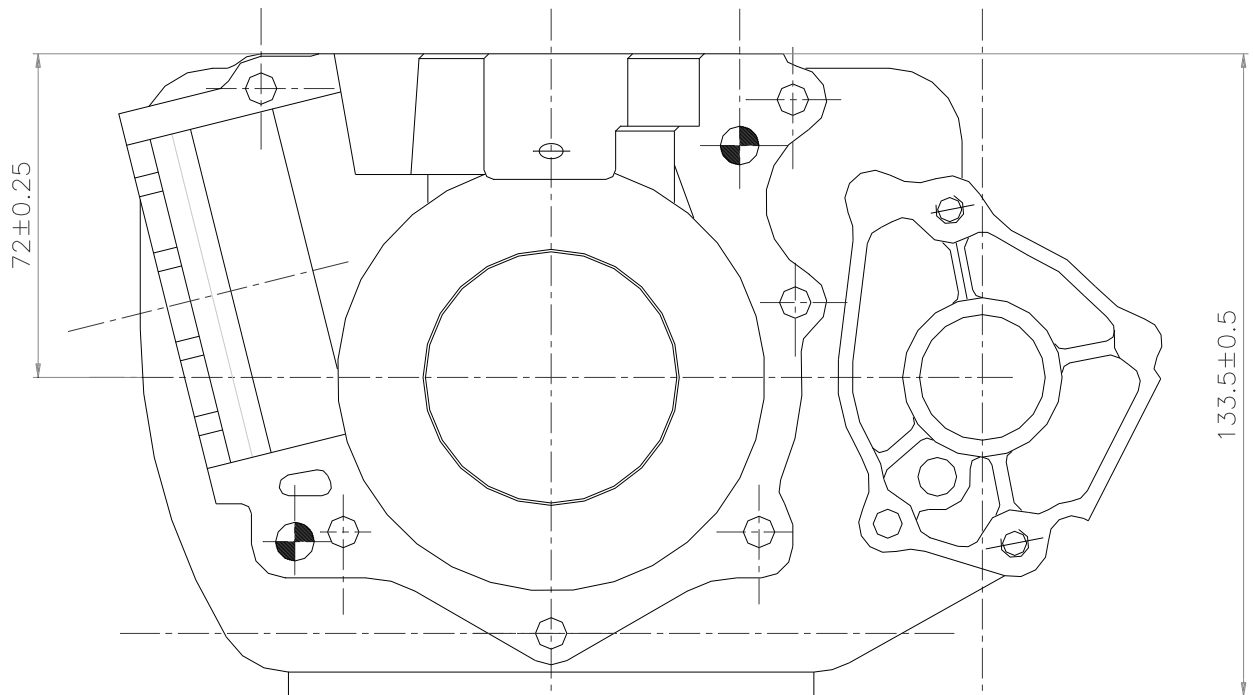
CARBURETTOR -Carburatore (2 or 3 jets)



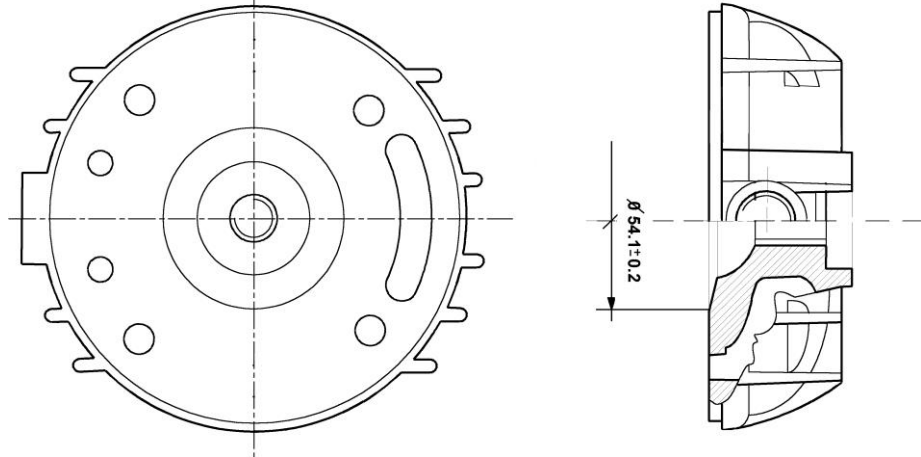
COMPLETE CRANKSHAFT-*Albero motore*



CRANKCASE-*Carter*

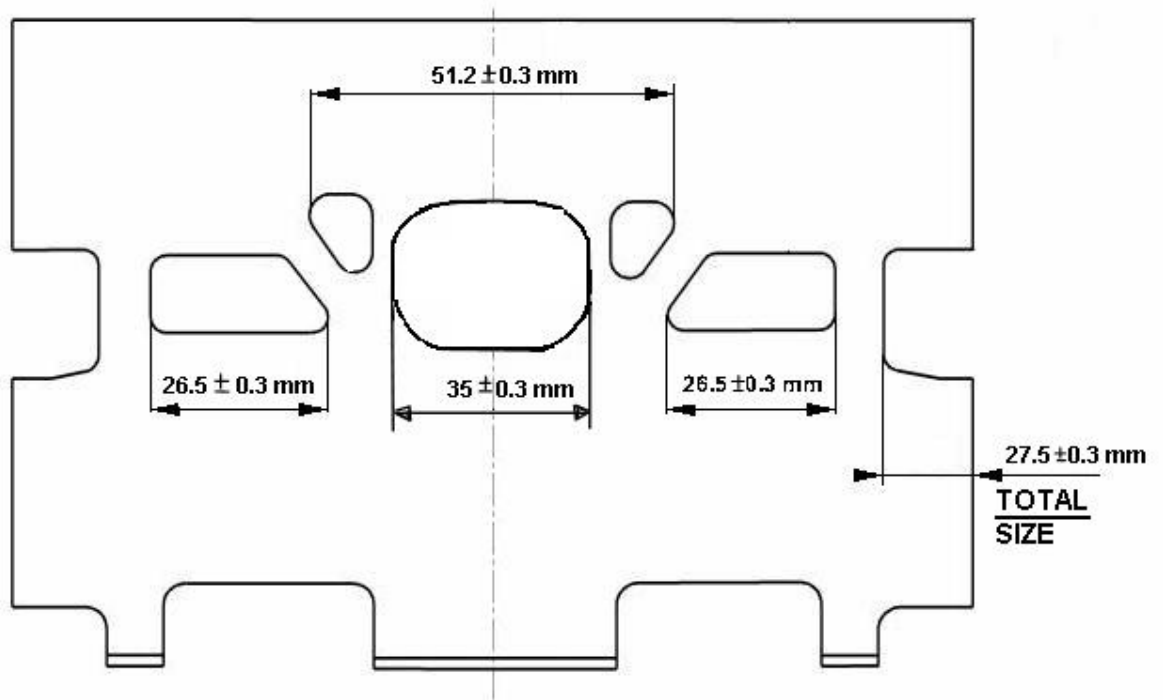


HEAD CYLINDER / Testa Cilindro



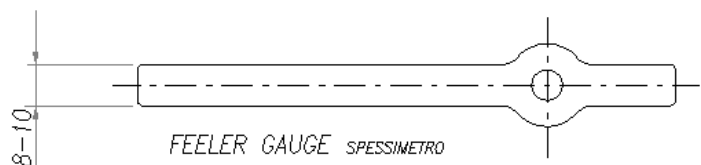
Combustion chamber volume (Volume camera di combustione) = 10,80 c.c. Min

CYLINDER DEVELOPMENT - Sviluppo cilindro

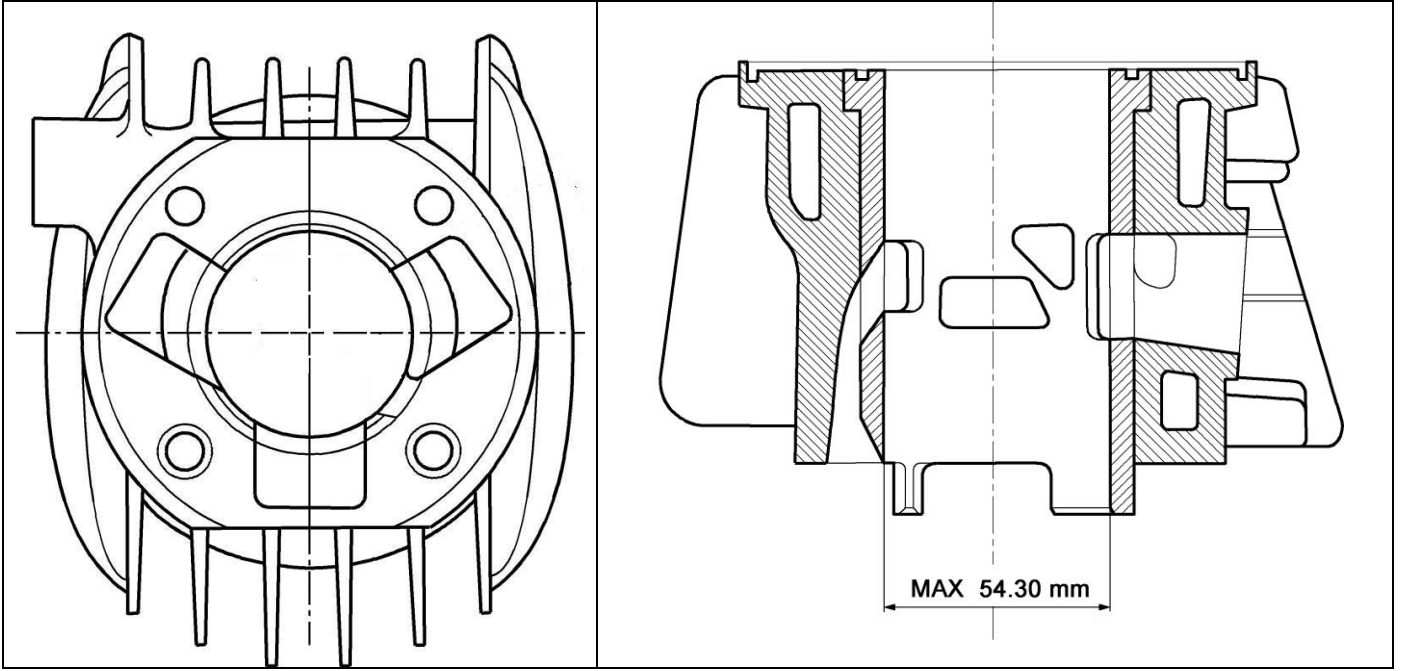


ALL MESUREMENT DONE WITH 0.2 mm FEELER GAUGE WIDE 8-10 mm
 Misurazione effettuata con spessimetro da 0.2mm e di larghezza 8-10 mm.

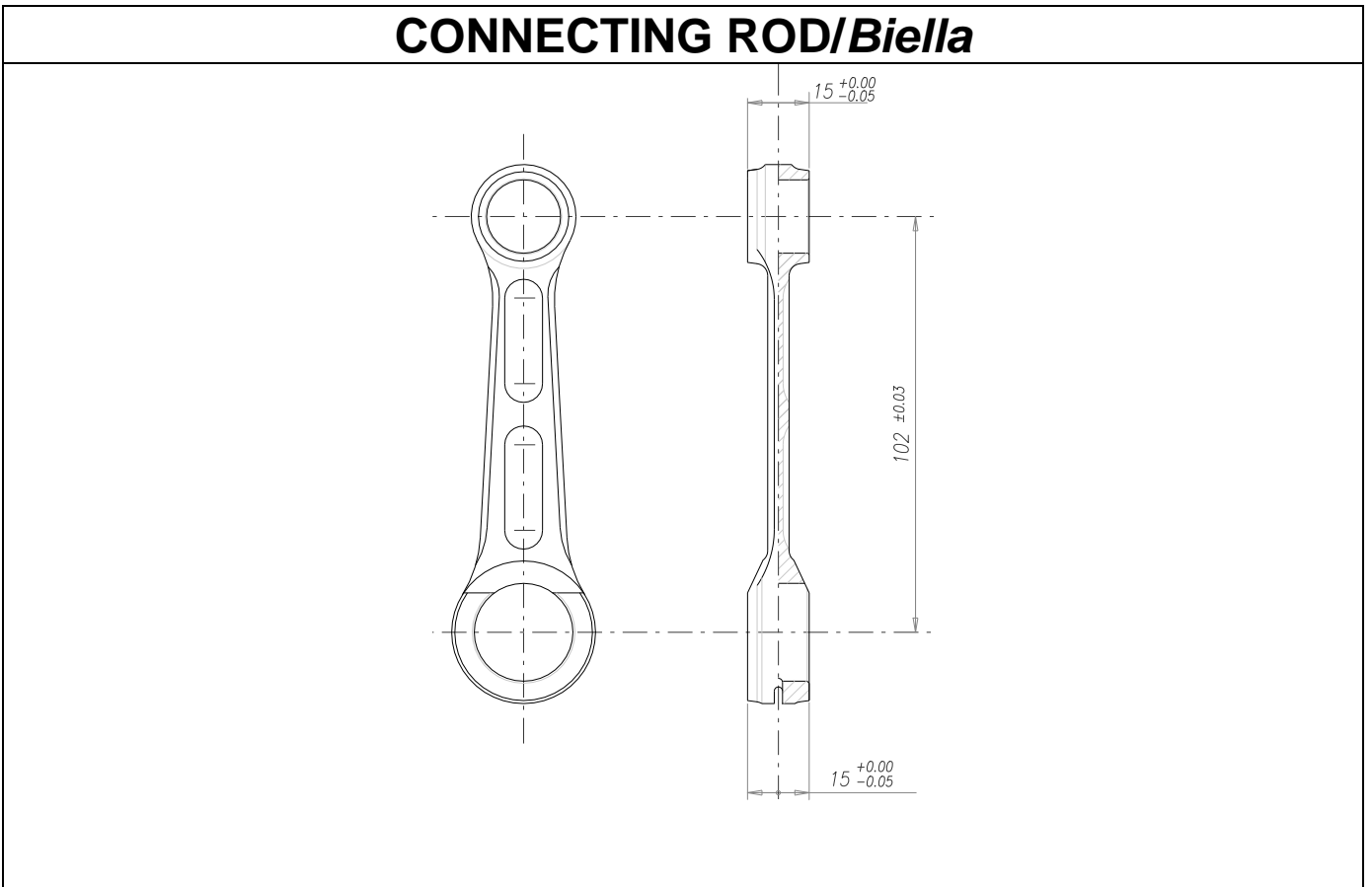
INTAKE "TT"	134°	±2°
TRANSFER TRAVASI	127°	±2°
EXHAUST SCARICO	177°	±2°



CYLINDER-Cilindro



CONNECTING ROD/Biella

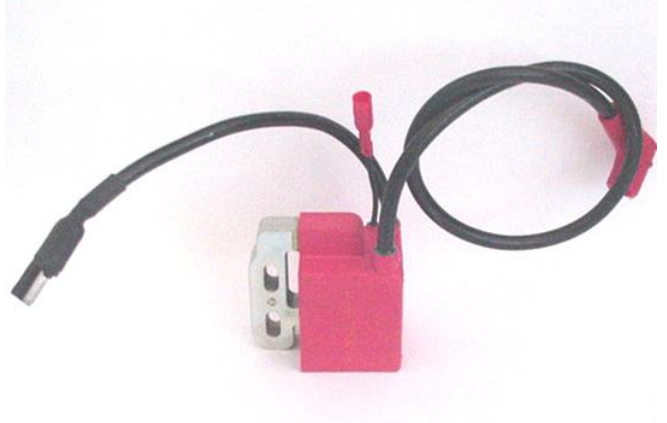


IGNITION/Accensione

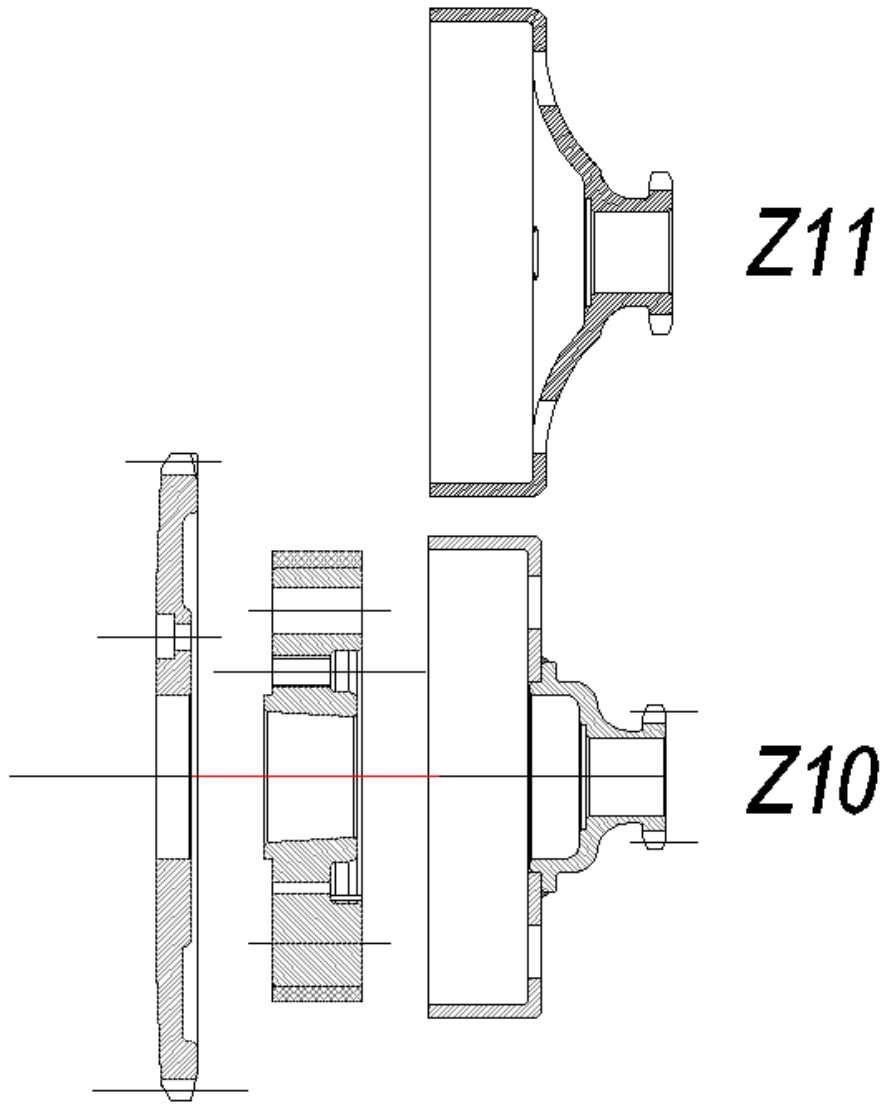
Manufacturer	SELETTA	
Model Number		
Rotation		

PHOTO OF IGNITION

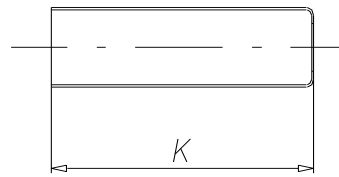
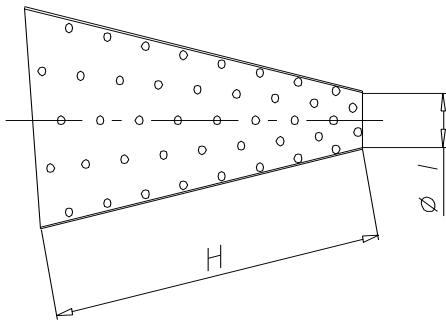
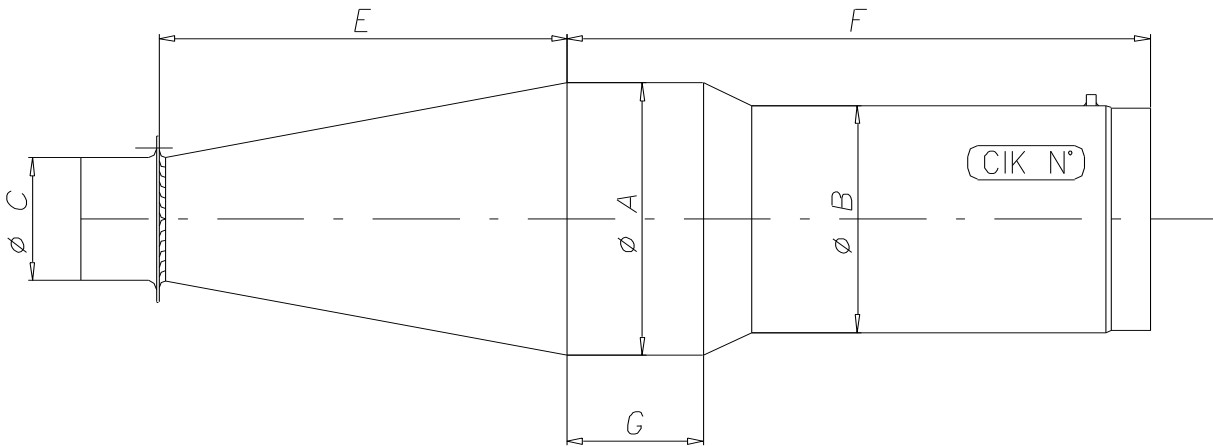
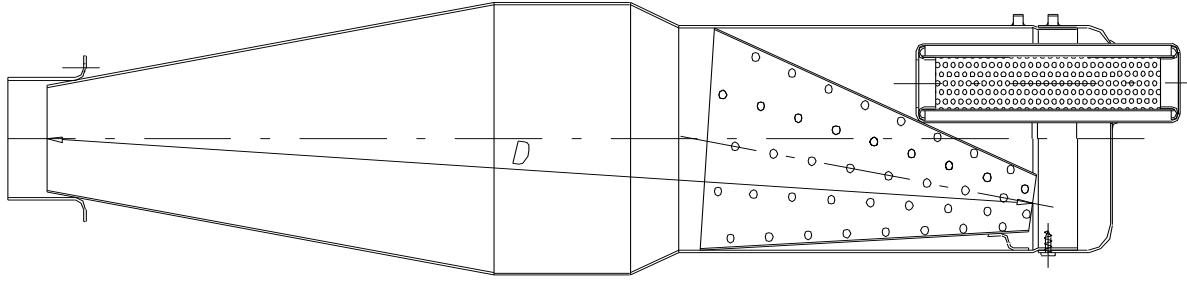
PHOTO OF COIL



CLUTCH-Frizione



MUFFLER-Marmitta



A: 110 mm \varnothing ext. ± 3 mm	B: 100 mm \varnothing ext. ± 3 mm	C: 54 mm \varnothing ext. ± 1.5 mm
D: 485 mm. ± 3 mm	E: 172 mm. ± 3 mm	F: 319 mm. ± 3 mm
G: 100 mm. ± 3 mm	H: 172 mm. ± 3 mm	I: 22 mm ± 1 mm
K: 130 mm. ± 3 mm		

AIRBOX

