



NORGES BILSPORTFORBUND

HOMOLOGERINGS DOKUMENT SEVEN TAG L4

Homologeringsnr.
NBF-08/M/14

Utgave 01/2010

Produsent	MOTORI SEVEN	
Merke	MOTORI SEVEN	
Modell	TAG L4	
Homologeringsperiode	1. Januar 2010 - 31. Desember 2014	8 Sider (+1)

Engine Specification Form		
125cc TAG Engine		
Manufacturer Address		
Motori Seven		
Via Perticara 130		
47023 Cesena (fc) Italy		
Manufacturer	MOTORI SEVEN	
Make	MOTORI SEVEN	
Model	TAG L4	
Inlet type	Carburator Dell'orto ø 30	
Number of pages	8	

PICTURE OF ENGINE





TECHNICAL INFORMATION

A CHARACTERISTICS		
	Measurement	Tolerances
Volume of cylinder	124.58 cm ³	125 cm ³
Original bore	54.00 mm	
Theoretical maximum bore	54.08 mm	
Stroke	54.40 mm	
Cooling system	Water cooled	
Number of carburation systems	1	
Number of transfer ports / ducts, cylinder / sump	5	
Number of exhaust ports / ducts	3	
Shape of the combustion chamber	Spherical – with squish	
Length between axes of the connecting rod	110	
Minimum weight of connecting rod		+/- 0.1 mm
Volume of combustion chamber	9 (spark plug thread excluded)	
Squish value	minimum 0.8 mm	

B OPENING ANGLES		
Exhaust	182	Max
Of exhaust ports / ducts	135	Max

C LIST OF ACCESSORIES INCLUDED	
<i>(List accessories as shown below)</i>	<i>Centrifugal clutch YES</i>
<i>Carburetor dell'orto Ø 30</i>	
<i>Generator for battery charging NO</i>	
<i>Electric starter YES</i>	
<i>Exhaust with flex NO</i>	

D MATERIAL	
Cylinder	<i>Aluminium AL-SI</i>
Connecting rod	<i>Steel Ni cr mo</i>
Crankshaft	<i>Steel Ni cr mo</i>
Head	<i>Aluminium AL-SI</i>
Liner	<i>Aluminium + nicasil</i>
Crankcase	<i>Aluminium AL-SI</i>
Piston	<i>Aluminium AL-SI</i>
Piston Ring	



DRAWING OF THE CYLINDER DEVELOPMENT

Chord reading

B = 52.8

C1= 21.7

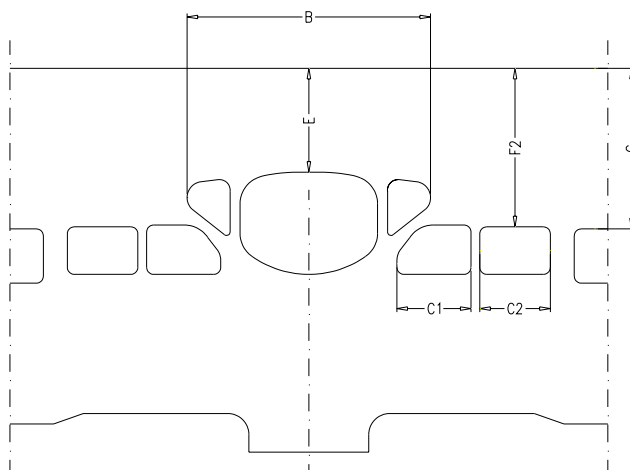
C2= 21.7

Angular reading by inserting a 0.2 mm gauge

E = 33.2

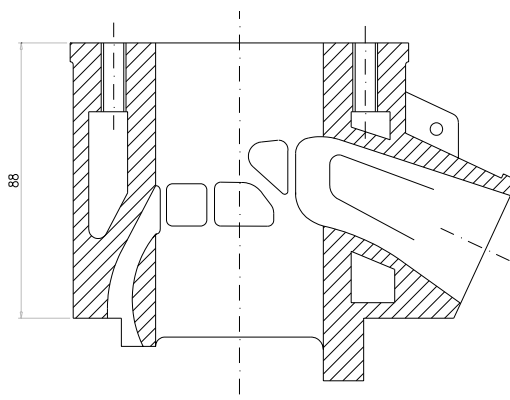
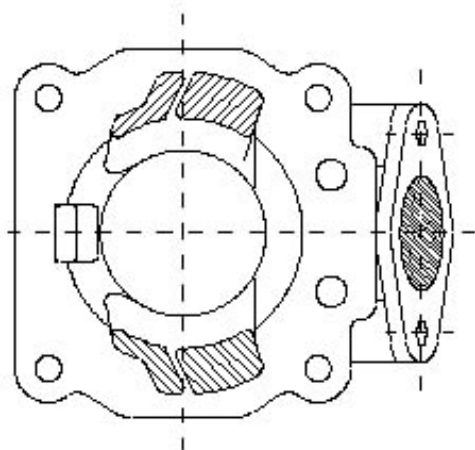
F = 44.3

G = 44.3



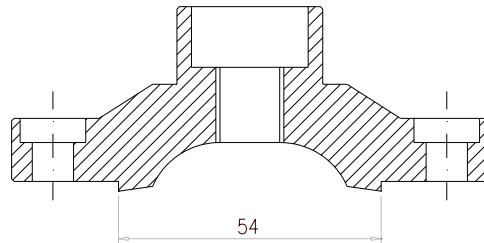
DRAWING OF THE CYLINDER BASE

CYLINDER SECTION VIEW





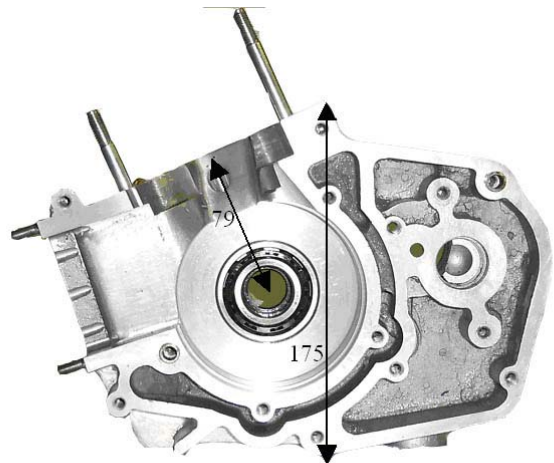
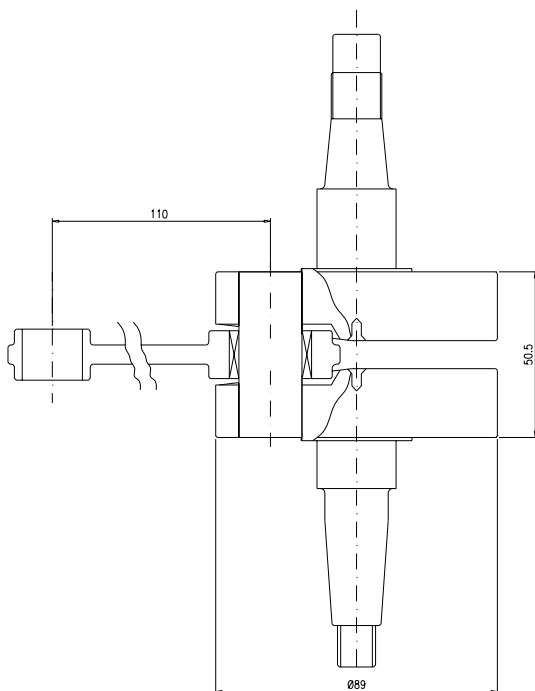
DRAWING OF THE CYLINDER HEAD AND THE COMBUSTION CHAMBER



Combustion chamber volume = 9 c.c. minimum

DRAWING OF THE CRANKSHAFT

DRAWING OF THE INSIDE OF SUMP



Complete weight = Kg 2,230 Tolerance= \pm gr100



IGNITION	
Manufacturer	Selettra o PVL
Model Number	06000160
Rotation	P 3356
Description	
PHOTO OF IGNITION	PHOTO OF COIL
	
SELETTRA	PVL

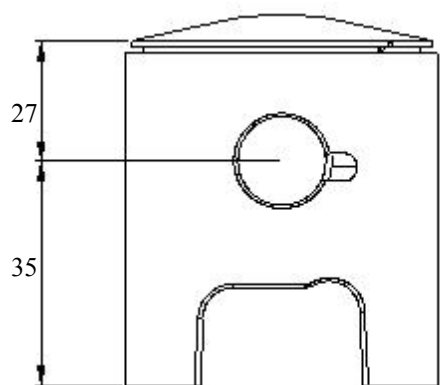


CARBURETOR DIMENSION



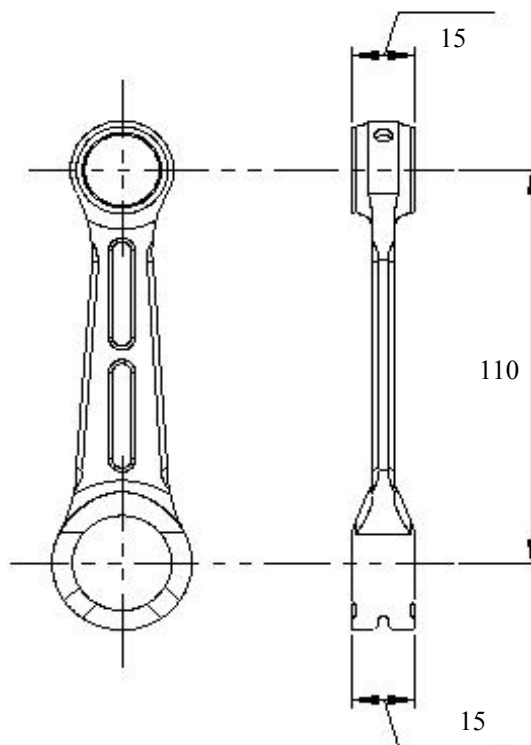
PHBE Ø 30
Diameter max 30,2 (tolerances included)

PISTON



Weight= 116 gr Tolerance= ± 5 gr

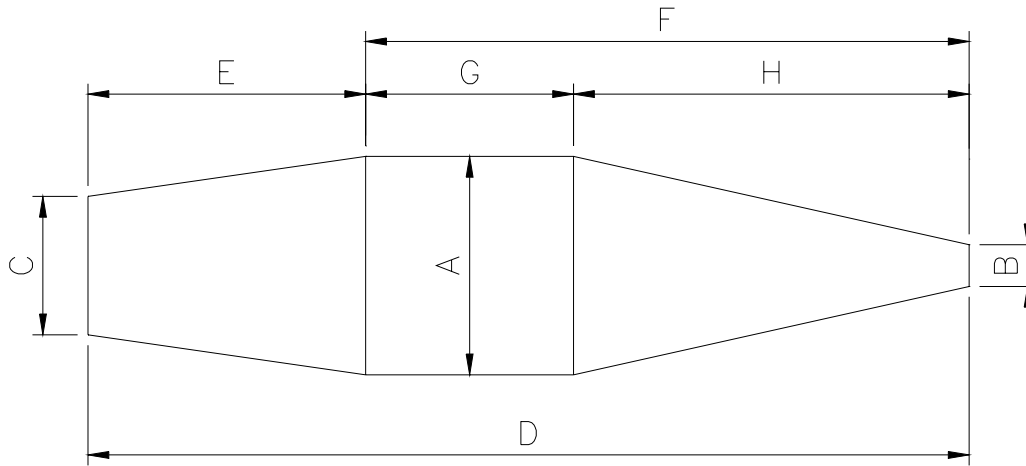
CONNECTING ROD



Weight= 130 gr Tolerance= ±10 gr



DRAWING OF THE SILENCER AND IT'S COMPONENTS



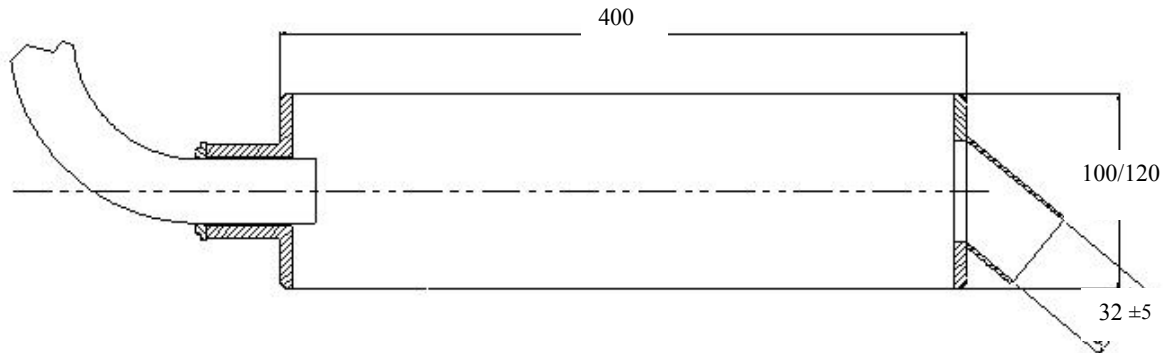
The end parts of the silencer must have two soldered pairs of lugs (one pair at the top and one pair at the bottom) to allow for fixing of seals by the Organizer so that the silencer may be opened during the competition

Measurements:

- A: 105
- B: 20
- C: 66.5
- D: 424
- E: 133.5
- F: 290.3
- G: 100
- H: 190.3



DRAWING OF THE SILENCER



DRAWING OF THE CLUTCH

**Item
Weight
Tolerance**

A = 127

B = 105.5

C = 114

